

A close-up photograph of a bartender's hands pouring a vibrant red liquid from a jigger into a glass filled with ice. The bartender is wearing a dark top and a necklace. To the right, a large, polished metal cocktail shaker stands on a perforated metal bar top. The background is softly blurred, showing warm, ambient lighting.

  
COCKTAIL  
KINGDOM®

# CATALOG

2024

## TABLE OF CONTENTS

4	ABOUT US
5	SHAKERS
8	MIXING GLASSES
11	JIGGERS
14	BARSPoons & STIRRERS
18	STRAINERS
21	DASHERS & POURERS
24	KNIVES
26	GARNISH TOOLS & ACCESSORIES
30	ICE TOOLS & MOLDS
33	SETS & KITS
35	BAGS & CASES
37	DRINKWARE
44	COLLABORATIONS
58	LIBRARY
61	SHOP BY FINISH
69	GET IN TOUCH

# ABOUT US



As the world's premier manufacturer and distributor of professional barware, our products combine historical designs, contemporary ergonomics, and commercial durability to create elegant barware solutions for the professional bartender.

Cocktail Kingdom began as a crucial resource during the early-aughts cocktail renaissance. Our founder, Greg Boehm, noted that bartenders lacked access to the proper tools to hone the rapidly evolving craft. Working alongside bar professionals, with a passion for history and obsessive attention to detail, we set out on an international hunt to fill this void.

That drive for excellence, precision, and quality continues today. We source products from across the globe, and our house designs (from Koriko®, Leopold®, and Yarai® to name a few) are brand standards in the cocktail industry worldwide.

Whether you are a seasoned bartending lifer or a passionate home bartender, you will find the absolute best tools for the job at Cocktail Kingdom.

# SHAKERS

OUR INDUSTRY-LEADING QUALITY CONTROL GIVES YOU A  
PERFECT BALANCE BETWEEN FLEXIBILITY AND RIGIDITY  
THAT ENSURES A TIGHT SEAL WITH EASY SEPARATION.





## KORIKO® WEIGHTED SHAKING TINS

The choice of beverage industry professionals. Our original house brand, Koriko® is synonymous with Cocktail Kingdom quality.

**MATERIAL** Stainless Steel      **FEATURES** Weighted bottom

**SIZE (18oz)** H 5.1in (13 cm) x D 3.4in (8.7 cm)

**SIZE (28oz)** H 6.9in (17.5 cm) x D 3.5in (9 cm)

### SET OF TWO KORIKO® SHAKING TINS (18 OZ & 28 OZ)

A.	Stainless Steel	KIT-SHA-KOR-ST
B.	Gold-Plated	KIT-SHA-KOR-G
C.	Copper-Plated	KIT-SHA-KOR-C
D.	Gunmetal Black	KIT-SHA-KOR-GB

### SMALL KORIKO® WEIGHTED SHAKING TIN (18 OZ)

E.	Stainless Steel	SHA-KOR18ST
F.	Gold-Plated	SHA-KOR18G
G.	Copper-Plated	SHA-KOR18C
H.	Gunmetal Black	SHA-KOR18GB

### LARGE KORIKO® WEIGHTED SHAKING TIN (28 OZ)

I.	Stainless Steel	SHA-KOR28ST
J.	Gold-Plated	SHA-KOR28G
K.	Copper-Plated	SHA-KOR28C
L.	Gunmetal Black	SHA-KOR28GB



## LEOPOLD® WEIGHTED SHAKING TINS

Inspired by antique barware dating to the 1920s-30s, the Leopold® line carries a streamlined art deco style.

**MATERIAL** Stainless Steel      **FEATURES** Weighted bottom with lip

**SIZE (18oz)** H 5 in (12.5 cm) x D 3.4 in (8.6 cm)

**SIZE (28oz)** H 6.9 in (17.5 cm) x D 3.5 in (9 cm)

### SET OF TWO LEOPOLD® SHAKING TINS (18 OZ & 28 OZ)

M.	Stainless Steel	KIT-SHA-LEO-ST
N.	Gold-Plated	KIT-SHA-LEO-G
O.	Copper-Plated	KIT-SHA-LEO-C
P.	Gunmetal Black	KIT-SHA-LEO-GB

### SMALL LEOPOLD® WEIGHTED SHAKING TIN (18 OZ)

Q.	Stainless Steel	SHA-LEO18ST
R.	Gold-Plated	SHA-LEO18G
S.	Copper-Plated	SHA-LEO18C
T.	Gunmetal Black	SHA-LEO18GB

### LARGE LEOPOLD® WEIGHTED SHAKING TIN (28 OZ)

U.	Stainless Steel	SHA-LEO28ST
V.	Gold-Plated	SHA-LEO28G
W.	Copper-Plated	SHA-LEO28C
X.	Gunmetal Black	SHA-LEO28GB



## USAGI™ HEAVYWEIGHT COBBLER SHAKER

When pomp and elegance are key, reach for a 3-piece Usagi Shaker. Includes a built-in strainer.

**MATERIAL** Stainless Steel

**SIZE (500 ML)** H 7.3 in (18.5 cm) x D 3.3 in (8.5 cm)

**SIZE (800 ML)** H 8.5 in (21.5 cm) x D 3.5 in (9 cm)

### HEAVYWEIGHT USAGI™ COBBLER SHAKER (500 ML)

Y.	Stainless Steel, Mirror Finish	SHA-USG500ST-MIR
Z.	Stainless Steel, Matte Finish	SHA-USG500ST-MAT
AA.	Gold-Plated	SHA-USG500G
AB.	Copper-Plated	SHA-USG500C

### USAGI™ COBBLER SHAKER (800 ML)

AC.	Stainless Steel, Mirror Finish	SHA-USG800ST-MIR
AD.	Stainless Steel, Matte Finish	SHA-USG800ST-MAT
AE.	Copper-Plated	SHA-USG800C



## DAVID WONDRICH SHAKERS

Super-premium recreations of historical shakers.

**MATERIAL** Silver-Plated EPNS

**SIZE (COLEY™)** H 10.2 in (26 cm) x D 3.4 in (8.6 cm)

**SIZE (VOLNEY™)** H 9.4 in (24 cm) x D 3.7 in (9.5 cm)

### VOLUME: 520 ML (18 OZ)

AF.	Coley™ Shaker	WON-SHA-COL520
-----	---------------	----------------

### VOLUME: 715 ML (24 OZ)

AG.	Volney™ Shaker	WON-SHA-VOL715
-----	----------------	----------------



## DE SOTO PETIT COCKTAIL SHAKER

**MATERIAL** Stainless Steel

**SIZE** H 6.1 in (15.6 cm) x D 3.1 in (8.1 cm)

### VOLUME: 350 ML (11.8 OZ)

AH.	Petit Cocktail Shaker	SHA-SOT350ST
-----	-----------------------	--------------



# MIXING GLASSES





### 500 ML MIXING GLASSES (17 OZ)

Entry-level, utilitarian, durable. 1 cocktail capacity.

**MATERIAL** Glass  
**SIZE** H 5.3 in (13.5 cm) x D 3.6 in (9.2 cm)

AI. Yarai® Mixing Glass	MXG-YAR500
AJ. Sokata Mixing Glass	MXG-SOK500



### 550 ML MIXING GLASSES (19 OZ)

Hand-blown and etched, these are the industry standard. 1-2 cocktail capacity.

**MATERIAL** Glass  
**SIZE** H 5.3 in (13.5 cm) x D 3.5 in (8.8 cm)

AK. Yarai® Mixing Glass Seamless	MXG-SYAR550
AL. Yarai® Mixing Glass, Seamless, Flat Base	MXG-SYAR550FB
AM. Paddle Mixing Glass, Seamless	MXG-SPAD550
AN. Paddle Mixing Glass, Seamless, Flat Base	MXG-SPAD550FB



### 675 ML MIXING GLASSES (23 OZ)

2-3 cocktail capacity

**MATERIAL** Glass  
**SIZE** H 6.6 in (16.7 cm) x D 3.6 in (9 cm)

AO. Yarai® Mixing Glass, Seamless, Large	MXG-SYAR675
AP. Yarai® Mixing Glass, Seamless, Large, Flat Base	MXG-SYAR675FB
AQ. Paddle Mixing Glass, Large, Seamless	MXG-SPAD675
AR. Paddle Mixing Glass, Large, Seamless, Flat Base	MXG-SPAD675FB
AS. Sokata Mixing Glass, Large	MXG-SOK675



### 800 ML MIXING GLASSES (28 OZ)

3-4 cocktail capacity

**MATERIAL** Glass  
**SIZE** H 6 in (15 cm) x D 4 in (10 cm)

AT. Yarai® Mixing Glass, Seamless, Extra-Large, Flat Base	MXG-SYAR800FB
AU. Paddle Mixing Glass, Extra-Large, Seamless, Flat Base	MXG-SPAD800FB



### PURO BURRO MIXING GLASS

**MATERIAL** Recycled Glass  
**SIZE** H 5.9 in (14.9 cm) x D 3.5 in (8.9 cm)

**VOLUME: 630 ML (21 OZ)**

AV. Mexican Mixing Glass	MXG-MEX-630
--------------------------	-------------





## STEMMED MIXING GLASSES

**BERRY WALL™ MATERIAL** Crystal, Lead-Free **SIZE** H 7.8 in (19.7 cm) x D 3.7 in (9.3 cm)  
**EXTRA LARGE MATERIAL** Glass **SIZE** H 7.4 in (18.8 cm) x D 4.1 in (10.5 cm)  
**GALLONE MATERIAL** Glass **SIZE** H 9.4 in (24 cm) x D 5.7 in (14.5 cm)

**VOLUME: 500 ML (17 OZ)**

AW. Berry Wall™ Footed Mixing Glass **WON-MXG-500BW-CLR**

**VOLUME: 750 ML (25 OZ)**

AX. Extra Large Stemmed Mixing Glass **MXG-STEM750**

**VOLUME: 1 L (33.8 OZ)**

AY. Gallone Mixing Glass **MXG-GAL1000**



## MIXTIN™ STIRRING TIN

Vacuum insulated, nearly indestructible

**MATERIAL** 18/8 Stainless Steel with Brushed Finish  
**FEATURES** Double-Walled and Vacuum Insulated  
**SIZE** H 6 in (15.2 cm) x D 4 in (10.1 cm)

**VOLUME: 625 ML (21 OZ)**

AZ. Mixtin™ Stirring Tin, Banded **MXG-MXTN625BND**

BA. Mixtin™ Stirring Tin, Banded, Gold Finish **MXG-MXTN625BND-G**

BB. Mixtin™ Stirring Tin, Banded, Gunmetal Finish **MXG-MXTN625BND-GB**

BC. Mixtin™ Stirring Tin, Pandan **MXG-MXTN625PAN**

BD. Mixtin™ Stirring Tin, Sakura **MXG-MXTN625SAK**



## PROTECTIVE CASE

**MATERIAL** Neoprene  
**SIZE** H 5.3 in (13.5 cm) x D 3.5 in (9 cm)

BE. Protective Sleeve for Mixing Glass, Black **OTH-MXG-SLV01**



# JIGGERS

ACCURACY AND PRECISION ARE KEY WHEN CRAFTING BALANCED COCKTAILS, AND OUR JIGGERS ARE DESIGNED TO MEET THE HIGHEST QUALITY CONTROL STANDARDS IN THE INDUSTRY.



## JAPANESE STYLE JIGGERS

The measurement tool of choice in the modern bar.



**MATERIAL:** 18/8 Stainless Steel

**SIZE (1/2 oz / 3/4 oz):** H 3 in (7.5 cm) x 1.7 in (4.4 cm)

**SIZE (1/2 oz / 1 oz):** H 4.4 in (11.3 cm) x D 1.7 in (4.4 cm)

**SIZE (1 oz / 2 oz):** H 4.9 in (12.4 cm) x D 1.8 in (4.6 cm)

**VOLUME: 1 OZ OVER 2 OZ | MARKINGS: 1/2 OZ, 3/4 OZ, 1 1/2 OZ**

BF. Stainless Steel JIG-JAP0102ST

BG. Gold-Plated JIG-JAP0102G

BH. Copper-Plated JIG-JAP0102C

BI. Gunmetal Black JIG-JAP0102GB

**VOLUME: 1 OZ OVER 1 1/2 OZ | MARKINGS: 1/2 OZ, 3/4 OZ**

BJ. Stainless Steel JIG-JAP0115ST

**VOLUME: 1/2 OZ OVER 3/4 OZ | MARKINGS: 1/4 OZ**

BK. Stainless Steel JIG-JAP1234ST

BL. Gold-Plated JIG-JAP1234G

BM. Copper-Plated JIG-JAP1234C

BN. Gunmetal Black JIG-JAP1234GB

**MATERIAL:** 18/8 Stainless Steel

**SIZE (20ML / 40ML):** H 3.5 in (9 cm) x 1.7 in (4.4 cm)

**SIZE (25ML / 50ML):** H 4.3 in (11 cm) x D 1.8 in (4.6 cm)

**VOLUME: 20 ML OVER 40 ML | MARKINGS: 10 ML, 30 ML**

BO. Stainless Steel JIG-JAP2040ST

**VOLUME: 25 ML OVER 50 ML | MARKINGS: 15 ML, 35 ML**

BP. Stainless Steel JIG-JAP2550ST

## LEOPOLD® JIGGER

**MATERIAL:** Stainless Steel

**SIZE:** H 3.3 in (8.5 cm) x D 2.1 in (5.3 cm)



**VOLUME: 1 OZ OVER 2 OZ | MARKINGS: 1/4 OZ, 1/2 OZ, 3/4 OZ, 1 1/2 OZ**

BQ. Stainless Steel JIG-LEO-0102ST

BR. Gold-Plated JIG-LEO-0102G

BS. Copper-Plated JIG-LEO-0102C

BT. Gunmetal Black JIG-LEO-0102GB

BU. Banded Stainless Steel JIG-LEOB-0102ST

BV. Banded Gold-Plated JIG-LEOB-0102G

BW. Banded Copper-Plated JIG-LEOB-0102C

BX. Banded Gunmetal Black JIG-LEOB-0102GB

**MATERIAL:** Stainless Steel

**SIZE:** H 3.3 in (8.5 cm) x D 2.1 in (5.3 cm)

**VOLUME: 30 ML OVER 60 ML | MARKINGS: 10 ML, 15 ML, 20 ML, 40 ML**

BY. Stainless Steel JIG-LEO-3060ST

BZ. Stainless Steel JIG-LEOB-3060ST



## STEPPED JIGGER

**MATERIAL** Nickel Silver-Plated Brass/Stainless Steel  
**SIZE** H 2.5 in (6.4 cm) x D 2.2 in (5.6 cm)

<b>VOLUME: 1 OZ OVER 2 OZ</b>   <b>MARKINGS: ½ OZ, ¾ OZ, 1 ½ OZ</b>	
CA. Stainless Steel	RES-JIG02ST
CB. Copper-Plated	RES-JIG01C
CC. Gunmetal Black	RES-JIG01GB
CD. Stainless Steel, No Handle	RES-JIG02ST



## KORIKO® HEAVYWEIGHT JIGGER

**MATERIAL** Stainless Steel  
**FEATURES** One solid piece of Stainless Steel  
**SIZE** 3.6 in (9.1cm) x D 2.6 in (6.6cm)

<b>VOLUME: 1 OZ OVER 2 OZ</b>   <b>MARKINGS: ½ OZ, ¾ OZ, 1 ½ OZ</b>	
CE. Stainless Steel	JIG-HKOR-0102ST



## THE GIGGER

Reproduction of an antique, designed to measure a perfect 4:1 martini.

**MATERIAL** Aluminum  
**SIZE** H 10.6 in (27 cm) x D 1.7 in (4.3 cm)

<b>VOLUME: ¾ OZ OVER 3 OZ</b>	
CF. Aluminum	JIG-GIG3403AL



## MEEHAN'S MIXOLOGY SPOONS

**MATERIAL** Stainless Steel  
**FEATURES** Six spoons per set / Attached to a ring for easy toggling / Comes in a reusable tin box.  
**SIZE** L 4.9 in (12.6 cm) x W 1 in (2.6 cm) x H 0.4 in (1 cm)

<b>SPOON VOLUME: ¼ TSP, BARSPOON, ¾ TSP, 1 TSP, ½ TBSP, 1 TBSP</b>	
CG. Stainless Steel	MHN-OTH-SPNS

# BARSpoons & STIRRERS

ERGONOMIC COILS AND PERFECT BALANCE ARE TOUCHSTONES OF COCKTAIL KINGDOM BARSpoons.





## BROMLEY BAR SPOON

Heavyweight Paddle Topper

**MATERIAL** Stainless Steel  
**SIZE** H 14.17 in in (36.5 cm) x W 1 in (2.5 cm)

**LENGTH: 36 CM**

CH. Stainless Steel	BSP-BROM36-ST
CI. Gold-Plated	BSP-BROM36-G
CJ. Copper-Plated	BSP-BROM36-C
CK. Gunmetal Black	BSP-BROM36-GB



## HOFFMAN BAR SPOON

Lightweight Paddle Topper

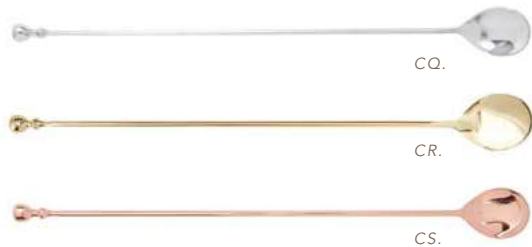
**MATERIAL** Stainless Steel  
**SIZE** H 13.2 / 17 in (33.5 / 43.5 cm) x W 1 in (2.5 cm)

**LENGTH: 33.5 CM**

CL. Stainless Steel	BSP-HOF33ST
CM. Gold-Plated	BSP-HOF33G
CN. Copper-Plated	BSP-HOF33C
CO. Gunmetal Black	BSP-HOF33GB

**LENGTH: 43.5 CM**

CP. Stainless Steel	BSP-HOF43ST
---------------------	-------------



## LEOPOLD® BAR SPOON

Smooth, coilless body, weighted topper, wide bowl

**MATERIAL** Stainless Steel  
**SIZE** H 14 in (36.5 cm) x W 1 in (2.5 cm)

**LENGTH: 36 CM**

CQ. Stainless Steel	BSP-LEO36ST
CR. Gold-Plated	BSP-LEO36G
CS. Copper-Plated	BSP-LEO36C



## MUDDLER BAR SPOON

Flat topper for pressing herbs

**MATERIAL** Stainless Steel with Muddler Top  
**SIZE** H 11.8 / 15.7 in (30 / 40 cm) x W 1 in (2.5 cm)

**LENGTH: 30 CM**

CT. Stainless Steel	BSP-MUD30ST
---------------------	-------------

**LENGTH: 40 CM**

CU. Stainless Steel	BSP-MUD40ST
---------------------	-------------



## TEARDROP™ BARSPOON

Simple, perfect, timeless

**MATERIAL** Stainless Steel

**SIZE** H 11.8 / 15.7 / 19.5 in (30 / 40 / 50 cm) x W 1 in (2.5 cm)

**LENGTH: 30 CM**

CV. Stainless Steel	<b>BSP-TD30ST</b>
CW. Gold-Plated	<b>BSP-TD30G</b>
CX. Copper-Plated	<b>BSP-TD30C</b>
CY. Gunmetal Black	<b>BSP-TD30GB</b>

**LENGTH: 40 CM**

CZ. Stainless Steel	<b>BSP-TD40ST</b>
DA. Gold-Plated	<b>BSP-TD40G</b>
DB. Copper-Plated	<b>BSP-TD40C</b>
DC. Gunmetal Black	<b>BSP-TD40GB</b>

**LENGTH: 50 CM**

DD. Stainless Steel	<b>BSP-TD50ST</b>
---------------------	-------------------



## TRIDENT BARSPOON

**MATERIAL** Stainless Steel with trident top

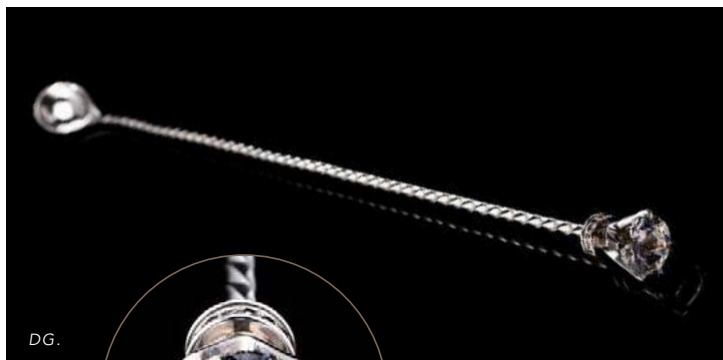
**SIZE** H 12.5 / 15.7 (31.5 / 40 cm) x W 1 in (2.5 cm)

**LENGTH: 31.5 CM**

DE. Stainless Steel	<b>BSP-TRI315ST</b>
---------------------	---------------------

**LENGTH: 40 CM**

DF. Stainless Steel	<b>BSP-TRI40ST</b>
---------------------	--------------------



## BLACK DIAMOND BARSPOON

**MATERIAL** Solid silver bar spoon with Swarovski crystal top and genuine black diamond details

**SIZE** L 17 in (43 cm)

**LENGTH: 43 CM**

DG. Solid Silver	<b>RES-BSP43SV</b>
------------------	--------------------



### BEACHBUM BERRY'S SKULL BAR SPOON

**MATERIAL** Stainless Steel  
**SIZE** H 13.2 / 15.7 in (33.5 / 40 cm) x W 1 in (2.5 cm)

LENGTH: 33.5 CM	
DH. Stainless Steel	BSP-SKL33ST
DI. Gold-Plated	BSP-SKL33G
DJ. Copper-Plated	BSP-SKL33C
DK. Gunmetal Black	BSP-SKL33GB



### BULU™ BARWARE PINEAPPLE BAR SPOON

**MATERIAL** Stainless Steel  
**SIZE** H 13.2 / 17 in (33.5 / 43.5 cm) x W 1 in (2.5 cm)

LENGTH: 33.5 CM	
DL. Stainless Steel	BSP-PNP33ST
DM. Gold-Plated	BSP-PNP33G
DN. Copper-Plated	BSP-PNP33C
LENGTH: 43.5 CM	
DO. Stainless Steel	BSP-PNP43ST



### DAVID WONDRICH JIM GRAY™ BAR SPOON

**MATERIAL** Stainless Steel with Silver-Plated EPNS finish  
**SIZE** H 13 in (33 cm) x W 1.2 in (3 cm)

LENGTH: 33.5 CM	
DP. Silver-Plated EPNS	WON-BSP-JG33SV



### DE SOTO DOUBLE TEARDROP™ STIRRER

**MATERIAL** Stainless Steel  
**SIZE** H 13.2 / 17 in (33.5 / 43.5 cm) x W 0.4 in (0.9 cm)

LENGTH: 33.5 CM	
DQ. Stainless Steel	BSP-SOT33ST
LENGTH: 43.5 CM	
DR. Stainless Steel	BSP-SOT43ST

# STRAINERS

ROOTED IN CLASSIC STYLES AND MODERN USABILITY,  
WE BROUGHT THE INDUSTRY INTO A NEW ERA WITH OUR  
KORIKO® AND BUSWELL® DESIGNS.





## KORIKO® HAWTHORNE STRAINER

This patented design is the benchmark in modern barware innovation.

**MATERIAL** Stainless Steel  
**SIZE** L 6 in (15.2 cm) x W 4 in (10.1 cm)

DS. Stainless Steel	STR-KOR-STL
DT. Gold-Plated	STR-KOR-G
DU. Copper-Plated	STR-KOR-C
DV. Gunmetal Black	STR-KOR-GB



## KORIKO® 2-PRONG HAWTHORNE STRAINER

**MATERIAL** Stainless Steel  
**SIZE** L 6.7 in (17 cm) x D 3.7 in (9.5 cm)

DW. Stainless Steel	STR-KOR2PR-STL
DX. Gold-Plated	STR-KOR2PR-G
DY. Copper-Plated	STR-KOR2PR-C
DZ. Gunmetal Black	STR-KOR2PR-GB



## BUSWELL® 4-PRONG HAWTHORNE STRAINER

**MATERIAL** Stainless Steel  
**SIZE** L 6.7 in (17 cm) x D 3.7 in (9.5 cm)

EA. Stainless Steel	STR-BUS4PR-ST
EB. Gold-Plated	STR-BUS4PR-G
EC. Copper-Plated	STR-BUS4PR-C
ED. Gunmetal Black	STR-BUS4PR-GB



## ANTIQUE-STYLE HAWTHORNE STRAINER

Petite design is a perfect match for our 550ml mixing glasses.

**MATERIAL** Stainless Steel  
**SIZE** L 6.5 in (16.4 cm) x W 3.2 in (8.1 cm)

EE. Stainless Steel	STR-ANTQ-ST
EF. Gold-Plated	STR-ANTQ-G
EG. Copper-Plated	STR-ANTQ-C



## LARGE ANTIQUE-STYLE HAWTHORNE STRAINER

Works well with our shaking tins and larger mixing glasses.

**MATERIAL** Stainless Steel  
**SIZE** L 7.4 in (18.9 cm) x W 3.6 in (9.1 cm)

EH. Stainless Steel	STR-LANTQ-ST
EI. Gold-Plated	STR-LANTQ-G
EJ. Copper-Plated	STR-LANTQ-C



## COCO™ STRAINER

A tea style strainer designed specifically for use with cocktails.

**MATERIAL** Stainless Steel  
**SIZE** L 9.25 in (23.5 cm) x W 3.6 in (9.3 cm) x D 2.6 in (6.7 cm)

EK. Stainless Steel	STR-COCO-ST
EL. Gold-Plated	STR-COCO-G
EM. Copper-Plated	STR-COCO-C
EN. Gunmetal Black	STR-COCO-GB



## PREMIUM JULEP STRAINER

Pairs well with a mixing glass.

**MATERIAL** Stainless Steel  
**SIZE** L 6.6 in (16.7 cm) x W 3 in (7.7 cm) x D 0.8 in (2 cm)

EO. Stainless Steel / Mirror Finish	STR-JUL-MIR
EP. Stainless Steel / Matte Finish	STR-JUL-MAT
EQ. Gold-Plated	STR-JUL-G
ER. Copper-Plated	STR-JUL-C
ES. Gunmetal Black	STR-JUL-GB

# DASHERS & POURERS





## BITTERS BOTTLE WITH CORK DASHER TOP

**MATERIAL (VESSEL)** Glass  
**MATERIAL (TOP)** Stainless Steel and Cork  
**SIZE (50 ML)** H 5.5 in (14 cm) x D 2 in (5 cm)  
**SIZE (100 ML)** H 6.3 in (16 cm) x D 2.6 in (6.5 cm)

### VOLUME: 50 ML (1.7 OZ)

ET. Classic, Stainless Steel Dasher Top	BTB-RCD50ST
EU. Classic, Gold-Plated Dasher Top	BTB-RCD50G
EV. Classic, Copper-Plated Dasher Top	BTB-RCD50C
EW. Beveled, Stainless Steel Dasher Top	BTB-BCD50ST
EX. Beveled, Gold-Plated Dasher Top	BTB-BCD50G
EY. Beveled, Copper-Plated Dasher Top	BTB-BCD50C

### VOLUME: 100 ML (3.4 OZ)

EZ. Classic, Stainless Steel Dasher Top	BTB-RCD100ST
FA. Classic, Gold-Plated Dasher Top	BTB-RCD100G
FB. Classic, Copper-Plated Dasher Top	BTB-RCD100C
FC. Beveled, Stainless Steel Dasher Top	BTB-BCD100ST
FD. Beveled, Gold-Plated Dasher Top	BTB-BCD100G
FE. Beveled, Copper-Plated Dasher Top	BTB-BCD100C



## THREADED BITTERS BOTTLE WITH IMPERIAL STYLE DASHDART®

**MATERIAL (VESSEL)** Glass  
**MATERIAL (TOP)** Aerospace-Grade Aluminum with Threaded Interior  
**SIZE** H 6.7 in (17 cm) x D 2.75 in (7 cm)

### VOLUME: 100 ML (3.4 OZ)

FF. Silver Color	BTB-RDD100SV
FG. Gold Color	BTB-RDD100G
FH. Copper Color	BTB-RDD100C
FI. Black Color	BTB-RDD100B



### 3-PACK DASHER TOP

**MATERIAL** Stainless Steel and Cork Base  
**SIZE** H 2 in (5 cm) x D 1 in (2.5 cm)

FJ. Stainless Steel	BTB-CD3PK-ST
FK. Gold-Plated	BTB-CD3PK-G
FL. Copper-Plated	BTB-CD3PK-C



### 2-PACK DASHDART®

**MATERIAL** Aerospace-Grade Aluminum with Threaded Interior  
**SIZE** H 1.8 in (4.5 cm) x D 1.1 in (2.8 cm)

FM. Silver Color	BTB-DD2PK-SV
FN. Antique Gold Color	BTB-DD2PK-G
FO. Copper Color	BTB-DD2PK-C
FP. Black	BTB-DD2PK-B



### SPEED POURER

**MATERIAL** Stainless Steel with Rubber Base  
**SIZE** H 4.1 in (10.5 cm) x D 1.2 in (3 cm)

FQ. Stainless Steel, Pack of 6	OTH-SPDPR6ST
FR. Copper-Plated, Pack of 4	OTH-SPDPR3C



### WIDE-MOUTH SPEED POURER

**MATERIAL** Stainless Steel with Rubber Base  
**SIZE** H 3.9 in (10 cm) x D 1.3 in (3.5 cm)

FS. Stainless Steel, Pack of 4	OTH-SPDPR4ST
FT. Copper-Plated, Pack of 3	OTH-SPDPR4C

# KNIVES





FU.

## BUSWELL® PARING KNIFE

The utilitarian workhorse

**MATERIAL** Blade with Polypropylene Handle and Sheath  
**SIZE** L 7.7 in (19.7 cm) x w 1 in (2.5 cm)

FU. 3.5" Blade

KNF-BUS-PAR



FV.

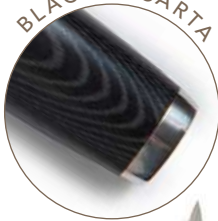
## IKURA™ BARTENDER'S UTILITY KNIFE

**MATERIAL** Forged Steel Blade and Wood Handle  
**FEATURES** 6.7 in (17 cm) blade with a 50 / 50 edge  
**SIZE** L 11.2 in (28.5 cm) x W 1.4 in (3.5 cm)

FV. Pakkawood Handle

OTH-KNF-IK-PK

BLACK MICARTA



FW.

FX.

FY.

FZ.

GA.

## OVERLORD™ KNIVES

Bringing premium, chef-quality knives to the bar

**MATERIAL** Composite steel / Damascus Steel  
**FEATURES** Sharpened at a 14% angle  
**SIZE (PARING)** L 7.8 in (20 cm) x W 0.8 in (2.2 cm)  
**SIZE (UTILITY)** L 9.3 in (23.7 cm) x W 0.9 in (2.3 cm)  
**SIZE (NAKIRI)** L 11.6 in (29.5 cm) x W 2.3 in (6 cm)  
**SIZE (CHEF)** L 13.1 in (33.3 cm) x W 1.8 in (4.8 cm)  
**SIZE (SERRATED)** L 12.5 in (32 cm) x W 1.1 in (3 cm)

### BLACK MICARTA HANDLE

FW. 3.5" Paring Knife	KNF-OLC-PAR
FX. 5" Utility Knife	KNF-OLC-UTL
FY. 6.8" Nakiri Knife	KNF-OLC-NK
FZ. 8" Chef Knife	KNF-OLC-CHF
GA. 8" Serrated Knife	KNF-OLC-SER

### PAKKAWOOD HANDLE

GB. 3.5" Paring Knife	KNF-OLPK-PAR
GC. 5" Utility Knife	KNF-OLPK-UTL
GD. 6.8" Nakiri Knife	KNF-OLPK-NK
GE. 8" Chef Knife	KNF-OLPK-CHF
GF. 8" Serrated Knife	KNF-OLPK-SER

### KNIFE BLOCK

GG. Overlord™ Knife Block Set	SET-OLC-KBA
-------------------------------	-------------

PAKKAWOOD HANDLE



GB.

GC.

GD.

GE.

GF.



GG.

# GARNISH TOOLS & ACCESSORIES





## PEELERS

**MATERIAL (CITRUS)** Steel Blade with Plastic Body  
**MATERIAL (BUSWELL)** Serrated Blade with Stainless Steel Body  
**SIZE** L 4.7 in (12 cm) x W 2.2 in (5.7 cm)  
**SIZE** L 4.7 in (12 cm) x W 2.5 in (6.3 cm)

### CITRUS PEELER

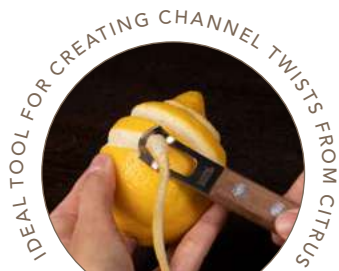
GH. Black OTH-PLR-BLK

### BUSWELL® CAST METAL PEELER

GI. Stainless Steel OTH-BUSPLR-ST

GJ. Gold-Plated OTH-BUSPLR-G

GK. Copper-Plated OTH-BUSPLR-C



## CHANNEL KNIFE

**MATERIAL** Black Walnut Wood Handle  
**SIZE** L 6.1 in (15.5 cm) x W 0.9 in (2.25 cm)

GL. Stainless Steel OTH-KNF-CHN



## JUICERS

**MATERIAL (STANDARD)** 100% Cast Aluminum  
**MATERIAL (QUEEN)** 100% Cast Aluminum  
**SIZE (STANDARD)** L 9 in (22.8 cm) x W 2.7 in (7 cm) x H 2 in (5.2 cm)  
**SIZE (QUEEN)** L 9.6 in (24.5 cm) x W 3.4 in (8.3 cm) x H 2.4 in (6 cm)

### MEXICAN BEEHIVE™ JUICER

GM. Aluminum OTH-JUC-BEE

### QUEEN BEEHIVE™ JUICER

GN. Aluminum OTH-JUC-QBEE



## CHURCH KEY

**MATERIAL** Stainless Steel  
**SIZE** L 5.9 in (14.9 cm) x W 1.65 in (4 cm)

GO. Stainless Steel OTH-CHKY-ST

GP. Gold-Plated OTH-CHKY-G

GQ. Copper-Plated OTH-CHKY-C



## MUDDLERS

**MATERIAL (BAD ASS MUDDLER)** Food-Safe Plastic  
**MATERIAL (NATURAL)** Wood (Non-Treated, Non-Varnished)  
**MATERIAL (CATO™ MUDDLER)** Natural Hardwood  
**SIZE (BAD ASS MUDDLER)** L 9.6 in (24.5 cm) x D 1.6 in (4 cm)  
**SIZE (NATURAL)** L 10 in (25.3 cm) x D 1.25 in (3.2 cm)  
**SIZE (CATO™ MUDDLER)** L 7.5 in (19 cm) x D 1.1 in (2.8 cm)

BAD ASS MUDDLER	
GR. Black	OTH-MUD-BASS
NATURAL WOOD MUDDLER	
GS. Natural Hardwood	OTH-MUD-WOOD
CATO™ MUDDLER	
GT. Wood	WON-MUD-CATO



## GARNISH TONGS

**MATERIAL** Stainless Steel  
**SIZE** L 10 in (25 cm)

GU. Stainless Steel	OTH-GRTNG-ST
GV. Gold-Plated	OTH-GRTNG-G
GW. Copper-Plated	OTH-GRTNG-C
GX. Gunmetal Black	OTH-GRTNG-GB



## ATOMIZERS

**MATERIAL (ATOMIZER)** Glass with Plastic Cap  
**MATERIAL (TRIOMPHE)** Plastic  
**SIZE (ATOMIZER)** H 5.5 in (14 cm) x D 1.25 in (3.1 cm)  
**SIZE (TRIOMPHE)** H 6.2 in (16 cm) x D 1.9 in (5 cm)

ATOMIZER	
GY. Aluminum	OTH-ATM50AL
MORGENTHALER TRIOMPHE ATOMIZER	
GZ. Chrome Color	MRG-ATM-AL



## DAVID WONDRICH ASHLEY NUTMEG GRATER

**MATERIAL** Silver-Plated  
**SIZE** H 2.7 in (7 cm) x D 1.8 in (4.8 cm)

HA. Silver-Plated EPNS	WON-OTH-NTMG
------------------------	--------------



HB.

## SWIZZLE STICK

**MATERIAL** Bois Lélé Tree  
**SIZE** L 10-12 in (25-30 cm)

HB. Natural Wood

OTH-SWZSTK



HC.

SHANNON  
MUSTIPHER  
COLLECTION

## MUSTIPHER COCKTAIL STENCILS

**MATERIAL** Powder Coated Stainless Steel  
**SIZE** L 6 in (15.2 cm) x W 4 in (10 cm)

HC. Stencils, Pack of 3

SMU-OTH-STNC-3



HD.

HF.

HE.

HG.

HH.

HI.

## COCKTAIL PICKS

**MATERIAL** Stainless Steel  
**SIZE (BROMLEY)** L 4.3 in (11 cm) x W 0.8 (2 cm)  
**SIZE (COCKTAIL PICK)** L 4in (10.15cm)

### BROMLEY COCKTAIL PICKS

HD. Stainless Steel, Pack of 12	OTH-PICK-BROM12ST
HE. Gold-Plated, Pack of 12	OTH-PICK-BROM12G
HF. Copper-Plated, Pack of 12	OTH-PICK-BROM12C

### COCKTAIL PICKS

HG. Stainless Steel, Pack of 12	OTH-PICK12ST
HH. Gold-Plated, Pack of 12	OTH-PICK12G
HI. Copper-Plated, Pack of 12	OTH-PICK12C



HJ.

HK.

## STEEL STRAWS

**MATERIAL** Stainless Steel  
**SIZE** 5 / 7.5 in (12.7/19 cm) D 0.2 in (0.6 cm)

HJ. 5 in (12.7cm)

STRW-05ST24

HK. 7.5 in (19cm)

STRW-75ST24



HL.

## BUSWELL REUSABLE STRAWS

**MATERIAL** Polypropylene  
**SIZE** L 4in (10.15cm)

HL. 7 7/8in (20cm), Pack of 200

STRW-BUS-78PP200

# ICE TOOLS & MOLDS





## TALON TONGS

**MATERIAL** Stainless Steel  
**SIZE** L 7.5 in (19 cm) x W 2.6 in (6.5 cm) x H 1 in (2.5 cm)

HM. Stainless Steel	OTH-TLNTNG-ST
HN. Gold-Plated	OTH-TLNTNG-G
HO. Copper-Plated	OTH-TLNTNG-C

## ICE PICKS

**MATERIAL** Stainless Steel with Wood Handle  
**SIZE (ANVIL)** L 7 in (17.8 cm) x W 1.5 in (3.8 cm) x H 0.9 in (2.2 cm)  
**SIZE (PITCHFORK)** L 7 in (17.8 cm) x W 1.5 in (3.8 cm) x H 0.9 in (2.2 cm)

HP. Anvil™ Ice Pick	ICE-PICK-ANV
HQ. Pitchfork Ice Pick	ICE-PICK-PFK



## ICE TAPPERS

**MATERIAL** Stainless Steel or Brass with Plastic Handle  
**SIZE** L 10.6 in (27 cm) x W 1.8 in (4.5 cm) x H 0.9 in (2.3 cm)

HR. Stainless Steel, Black Handle	ICE-TPR-STBL
HS. Brass, Black Handle	ICE-TPR-BRSBL



## THE "SCHMALLET" ICE MALLET AND BAG

**MATERIAL** Wood Mallet with Canvas Bag  
**SIZE (BAG)** L 16.5 in (42 cm) x W 8.5 in (21.5 cm)  
**SIZE (MALLET)** L 13.5 in (34 cm) x W 5.3 in (13.5 cm)

HT. The "Schmallet" Ice Mallet	ICE-SHMLT
HU. Lewis Bag	OTH-BAG02LEW
HV. "Schmallet" Ice Mallet and LewisBag	KIT-SHMLT-LEW





## ICE TRAYS

**MATERIAL (1.25" TRAY)** Silicone / TPR / PP

**MATERIAL (ICE BALL)** PP

**MATERIAL (2", 2.5", COLLINS)** TPR

**SIZE (1.25" TRAY)** L 7 in (18 cm) x W 4.4 in (11.2 cm) x H 1.3 in (3.4 cm)

**SIZE (2" TRAY)** L 7 in (18 cm) x W 4.8 in (12 cm) x H 2.2 in (5.6 cm)

**SIZE (2.5" TRAY)** L 5.6 in (14.6 cm) x W 5.6 in (14.6 cm) x H 2.7 in (7 cm)

**SIZE (COLLINS)** L 5.6 in (14.6 cm) x W 6.3 in (16 cm) x H 1.3 in (3.4 cm)

**SIZE (ICE BALL)** L 5.6 in (14.2 cm) x W 5.6 in (14.2 cm) x H 2.5 in (6.4 cm)

HW. 1.25in Square Ice Cube Tray, Green	<b>ICE-SQU125GR</b>
HX. 2in Square Ice Cube Tray, Blue	<b>ICE-SQU02BL</b>
HY. 2in Square Ice Cube Tray, Gray	<b>ICE-SQU02GRY</b>
HZ. 2.5in Square Ice Cube Tray, Gray	<b>ICE-SQU25GRY</b>
IA. Collins Ice Mold	<b>ICE-COL525</b>
IB. 2in Ice Ball Mold - Blue	<b>ICE-BALL2IN</b>

## ICE BALL MAKERS

**MATERIAL** Aerospace-Grade Aluminum

**FEATURES** Uses gravity and thermal conductivity to create a perfect sphere

**SIZE (55 MM)** H 6 in (15 cm) x D 4 in (10 cm)

**SIZE (70 MM)** H 7.5 in (19 cm) x D 5.5 in (14 cm)



### 55 MM ICE SPHERE

IC. Silver Finish	<b>ICE-55IBM-SV</b>
ID. Gold Finish	<b>ICE-55IBM-G</b>
IE. Copper Color	<b>ICE-55IBM-C</b>
IF. Black Finish	<b>ICE-55IBM-B</b>

### 70 MM ICE SPHERE

IG. Silver Finish	<b>ICE-70IBM-SV</b>
IH. Gold Finish	<b>ICE-70IBM-G</b>
II. Black Finish	<b>ICE-70IBM-B</b>

# SETS & KITS





## COCKTAIL KINGDOM® ESSENTIAL SETS

Everything you need to start making cocktails,  
in one giftable box.

- INCLUDES**
- (1) Mixing Glass, 550 ml
  - (1) Barspoon, 33.5 cm
  - (1) Japanese Style Jigger 1oz / 2oz (30 ml / 60 ml)
  - (1) Set of Two Koriko® Weighted Shaking Tins
  - (1) Koriko® Hawthorne Strainer

IJ.	Stainless Steel, 6 Piece Set	KIT-ESSN-SET-ST
IK.	Gold-Plated, 6 Piece Set	KIT-ESSN-SET-G
IL.	Copper-Plated, 6 Piece Set	KIT-ESSN-SET-C
IM.	Gunmetal Black, 6 Piece Set	KIT-ESSN-SET-GB



## BARWARE ROLL-UP KIT

- INCLUDES**
- (1) Barware Roll-Up
  - (1) Japanese Style Jigger 1 oz / 2 oz, Stainless Steel
  - (1) Hoffman® Barspoon, 33.5 cm, Stainless Steel
  - (1) Koriko® Hawthorne Strainer, Stainless Steel
  - (1) Garnish Tongs (25 cm)
  - (1) CitrusPeeler
  - (1) Channel Knife

IN.	Army Green Bag, 7 Piece Set	KIT-ROLL01GRN
IO.	Black Bag, 7 Piece Set	KIT-ROLL01BLK



## DAVID WONDRICH STIRRED SELECTION

- INCLUDES**
- (1) Clear Berry Wall™ Footed Mixing Glass
  - (1) Jim Gray™ Barspoon
  - (1) Lindley-Pick™ Hawthorne Strainer

IP.	Stirred Selection, 3 Piece Set	KIT-WON-STIR
-----	--------------------------------	--------------

# BAGS & CASES





## BARWARE ROLL-UP

**MATERIAL** Waxed canvas and leather accents with metal accessories

**SIZE** W 17.5 in (44.5 cm) x L 6.3 in (16 cm)

IQ. Army Green

OTH-ROLL01GRN

IR. Black

OTH-ROLL01BLK



## BARTENDER'S BACKPACK

**MATERIAL** Bees-waxed canvas body with leather trim and water-resistant nylon lining

**SIZE** L 7 in (17.7 cm) x W 11 in (28 cm) x H 19 in (48 cm)



IS.



IT.



IU.



IV.

IS. Black

OTH-WAXB-**BP**-BLK

IT. Brown

OTH-WAXB-**BP**-BRN

IU. Green

OTH-WAXB-**BP**-GRN

IV. Gray

OTH-WAXB-**BP**-GRY

# DRINKWARE





IW.



## BUSWELL® STACKABLE SHOT GLASSES



**MATERIAL** Glass

**SIZE** H 2.25 in (8.9 cm) x D 1.75 in (7.6 cm)

**VOLUME: 1 OZ (30 ML)**

IW. Case of 24

GLA-BUSSHOT01-24



IX.



IY.



IZ.



JA.



JB.



JC.



JD.



JE.

## STEMMED GLASSES



**MATERIAL** Glass

**SIZE (LEOPOLD® 3.75 OZ)**

H 6 in (15 cm) x D 4 in (10 cm)

**SIZE (LEOPOLD® 6 OZ)**

H 7.5 in (19 cm) x D 5.5 in (14 cm)

**SIZE (LEOPOLD® 7.5 OZ)**

H 5 in (12.5 cm) x D 3.5 in (9 cm)

**SIZE (NICK AND NORA 5 OZ)**

H 6 in (15 cm) x D 2.9 in (7.3 cm)

**SIZE (BEATRICE® 6.5 OZ)**

H 6 in (15 cm) x D 3.5 in (8.9 cm)

**SIZE (CORDIAL 3 OZ)**

H 5.25 in (13.3 cm) x D 2.5 in (6.3 cm)

### LEOPOLD® TASTING COUPE 3.75 OZ (112.5 ML)

IX. Classic, 6 Pack

GLA-LEOCP375-6

Classic, Case of 24

GLA-LEOCP375-24

### LEOPOLD® COUPE 6 OZ (180 ML)

IY. Classic, 6 Pack

GLA-LEOCP6-6

Classic, Case of 24

GLA-LEOCP6-24

### LEOPOLD® COUPE 7.5 OZ (225 ML)

IZ. Classic, 6 Pack

GLA-LEOCP75-6

Classic, Case of 24

GLA-LEOCP75-24

### NICK AND NORA 5 OZ (150 ML)

JA. Classic, 6 Pack

GLA-NCK5-6

Classic, Case of 24

GLA-NCK5-24

JB. Gold Trim, 6 Pack

GLA-NCK5G-6

Gold Trim, Case of 24

GLA-NCK5G-24

JC. Copper Trim, 6 Pack

GLA-NCK5C-6

Copper Trim, Case of 24

GLA NCK5C-24

### CORDIAL COCKTAIL GLASS 3 OZ (90 ML)

JD. 4 Pack

WON-GLA-GRG03-4

Case of 24

WON-GLA-GRG03-24

### BEATRICE® COUPE 6.5 OZ (200 ML)

JE. 6 Pack

GLA-BEACP65-6

Case of 24

GLA-BEACP65-24

STACKABLE!



JF.



JG.



JH.



JI.

STACKABLE!



JJ.

STACKABLE!



JK.



JL.



JM.

## ROCKS GLASSES



**MATERIAL** Glass

**SIZE (SINGLE STACKABLE)** H 3 in (7.6 cm) x D 2.88 in (7.3 cm)

**SIZE (SINGLE)** H 7.5 in (19 cm) x D 5.5 in (14 cm)

**SIZE (DOUBLE)** H 5 in (12.5 cm) x D 3.5 in (9 cm)

**SIZE (DANUTA™)** H 4 in (10.3 cm) x D 3.25 in (8.3 cm)

### SINGLE ROCKS GLASS 6 OZ (180 ML)

JF. Yarai® Stackable Rocks Glass, 6 Pack	GLA-YARRCK-STK6-6
Yarai® Stackable Rocks Glass, Case of 36	GLA-YARRCK-STK6-36

### SINGLE ROCKS GLASS 7.5 OZ (225 ML)

JG. Yarai® Rocks Glass, 6 Pack	GLA-YARRCK75-6
Yarai® Rocks Glass, Case of 24	GLA-YARRCK75-24
JH. Kiruto™ Rocks Glass, 6 Pack	GLA-KIRRCK75-6
Kiruto™ Rocks Glass, Case of 24	GLA-KIRRCK75-24

### DOUBLE ROCKS GLASS 10 OZ (295 ML)

JI. Yarai® Double Rocks Glass, 6 Pack	GLA-YARRCK10-6
Yarai® Double Rocks Glass, Case of 24	GLA-YARRCK10-24
JJ. Kiruto™ Double Rocks Glass, 6 Pack	GLA-KIRRCK10-6
Kiruto™ Double Rocks Glass, Case of 24	GLA-KIRRCK10-24

### DANUTA™ DOUBLE ROCKS GLASS 15 OZ (450 ML)

JK. Classic, 4 Pack	GLA-DANRCK15-4
Classic, Case of 24	GLA-DANRCK15-24
JL. Gold Trim, 4 Pack	GLA-DANRCK15G-4
Gold Trim, Case of 24	GLA-DANRCK15G-24
JM. Silver Trim, 4 Pack	GLA-DANRCK15SV-4
Silver Trim, Case of 24	GLA-DANRCK15SV-24

## BUSWELL® COLLINS GLASS



**MATERIAL** Glass

**SIZE** H 6 in (15 cm) x D 2.6 in (6.5 cm)

### VOLUME: 12 OZ (360 ML)

JN. Buswell™ Collins Glass, 6 Pack	GLA-BUSCOL12-6
Buswell™ Collins Glass, Case of 48	GLA-BUSCOL12-48



JN.



JO.

PEARL DIVER GLASS WITH ICE SPHERE



## BEACHBUM BERRY'S PEARL DIVER GLASS



**MATERIAL** Glass

**SIZE** H 5.6 in (14.3 cm) x D 3.6 in (9.2 cm)

**VOLUME: 12 OZ (360 ML)**

JO. Pearl Diver Glass, 4 Pack

BBB-GLA-PRL12-4

Pearl Diver Glass, 24 Pack

BBB-GLA-PRL12-24



JP.



JQ.



## SAUNDERS COLLECTION GLASSWARE



**MATERIAL** Glass

**SIZE (TOT GLASS)** H 3.2 in (8.1 cm) x D 2.8 in (7.1 cm)

**SIZE (SOUR GLASS)** H 6 in (15.2 cm) x D 3.2in (8.1 cm)

**TOT GLASS 4 OZ (118 ML)**

JP. Engraved Schooner Edition, Set of 4

SAU-GLA-TOT-4-ENG

Engraved Schooner Edition, Set of 16

SAU-GLA-TOT-16-ENG

**SOUR GLASS 7OZ (221ML)**

JQ. 6 Pack

SAU-GLA-SG7-6

Case of 24

SAU-GLA-SG7-24



JR.

EMBOSSED CROSS DESIGN



## VELADORA MEZCAL GLASSES



**MATERIAL** Glass

**SIZE** H 2.4 in (6 cm)

**VOLUME: 2.7 OZ (80 ML)**

JR. 6 Pack

GLA-VEL28-6

Case of 24

GLA-VEL28-24

## ACRYLIC DRINKWARE

Designed with pools, patios, and rooftops in mind—shatterproof variations of our standard glassware.



**MATERIAL** Acrylic

**SIZE (NICK AND NORA 5 OZ)**

H 6 in (15 cm) x D 2.9 in (7.3 cm)

**SIZE (LEOPOLD® 7 OZ)**

H 5 in (12.5 cm) x D 3.5 in (9 cm)

**SIZE (YARAI® DOUBLE ROCKS 10 OZ)**

H 5 in (12.5 cm) x D 3.5 in (9 cm)

**SIZE (BUSWELL® COLLINS 12 OZ)**

H 6 in (15 cm) x D 2.6 in (6.5 cm)

**SIZE (PEARL DIVER 12 OZ)**

H 5.6 in (14.3 cm) x D 3.6 in (9.2 cm)



JS.



JT.



JU.



JV.



JW.

### ACRYLIC NICK AND NORA 5OZ (150 ML)

JS. 6 Pack

GLA-NCK5ACR-6

Case of 24

GLA-NCK5ACR-24

### LEOPOLD® ACRYLIC COUPE 7OZ (207 ML)

JT. 6 Pack

GLA-LEOCP7ACR-6

Case of 24

GLA-LEOCP7ACR-24

### YARAI® ACRYLIC DOUBLE ROCKS GLASS 10 OZ (295 ML)

JU. 6 Pack

GLA-YARRCK10ACR-6

Case of 24

GLA-YARRCK10ACR-24

### BUSWELL™ ACRYLIC COLLINS GLASS 12 OZ (360 ML)

JV. 6 Pack

GLA-BUSCOL12-ACR-6

Case of 24

GLA-BUSCOL12-ACR-24

### ACRYLIC PEARL DIVER 12 OZ (360 ML)

JW. 4 Pack

BBB-GLA-PRL12ACR-4

Case of 32

BBB-GLA-PRL12ACR-32





## MINI MULE SHOTS

A proper copper mule, pocket-sized.

**MATERIAL** Copper

**SIZE** H 2.7 in (7 cm) x W 4.1 in (10.5 cm with handle) x D 2.3 in (6 cm)

**VOLUME: 5 OZ (148 ML)**

JX. Copper, 4 Pack

GLA-MUL05C-4

Copper, 16 Pack

GLA-MUL05C-16



## MOSCOW MULE MUG

**MATERIAL** Copper

**SIZE** H 4.5 in (11.4 cm) x D 3.4 in (8.6 cm)

**VOLUME: 12 OZ (360 ML)**

JY. Copper

GLA-MUL12C



## JULEP CUP

The classic shape redesigned in lightweight stainless steel for modern bars.

**MATERIAL** Stainless Steel

**SIZE** H 3 in (7.6 cm) x D 3 in (7.6 cm)

**VOLUME: 12 OZ (360 ML)**

JZ. Stainless Steel, Mirror Finish

GLA-JUL12ST-MIR

KA. Gold-Plated

GLA-JUL12ST-G

KB. Copper-Plated

GLA-JUL12ST-C

KC. Gunmetal Black

GLA-JUL12ST-GB

KD. Silver-Plated

GLA-JUL12ST-SV



## BEACHBUM BERRY'S SWIZZLE CUP

**MATERIAL** Stainless Steel

**SIZE** 3 in (7.6 cm) x D 3 in (7.6 cm)

**VOLUME: 14 OZ (414 ML)**

KE. Stainless Steel

BBB-GLA-SWZ14



KF.



KG.

## CERAMIC SHOT GLASSES



**MATERIAL** Ceramic

**SIZE (AGAVE)** H 1.7 in (4.5 cm) x D 1.9 in (4.9 cm)

**SIZE (ARTICHOKE)** H 1.7 in (4.5 cm) x D 1.9 in (4.9 cm)

**VOLUME: 1.5 OZ (44 ML)**

KF. Agave Shot Glass, 6 Pack

GLA-SHOT-AGAVE-6

Agave Shot Glass, 24 Pack

GLA-SHOT-AGAVE-24

KG. Artichoke Shot Glass, 6 Pack

GLA-SHOT-ARTI-6

Artichoke Shot Glass, 24 Pack

GLA-SHOT-ARTI-24



KH.



## AGAVE MUG



**MATERIAL** Ceramic

**SIZE** H 3.54 in (8.9 cm) x D 3.3 in (8.3 cm)

**VOLUME: 10.5 OZ (310 ML)**

KH. Agave Mug

GLA-MUG-AGAVE

Agave Mug, Case of 24

GLA-MUG-AGAVE-24



KI.

## DOLL HEAD MUG



**MATERIAL** Ceramic

**SIZE** H 5 in (12.5 cm) x D 4 in (10 cm)

**VOLUME: 15 OZ (550 ML)**

KI. Doll Head Mug

GLA-MUG-DOLL-15

Doll Head Mug, Case of 24

GLA-MUG-DOLL-15-24



KJ.



## BEACHBUM BERRY'S DEEP SIX COMMUNAL BOWL

**MATERIAL** Ceramic

**SIZE** L 9.8 in (25 cm) x W 4.9 in (12.5 cm) H 7.4 in (19 cm)

**VOLUME: 40 OZ (1.18 L)**

KJ. Deep Six Communal Bowl

BBB-BWL-DP6



KK.



## BULU™ PINEAPPLE BOWL

**MATERIAL** Ceramic

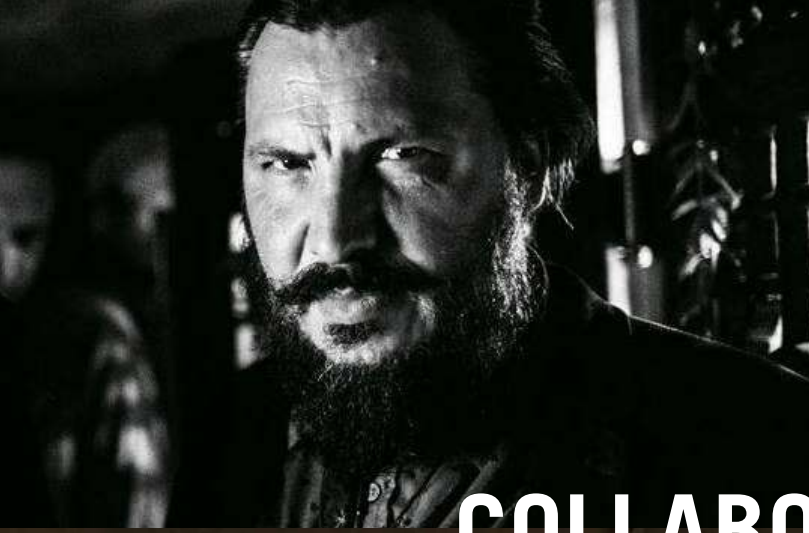
**SIZE** L 12.7 in (30.5 cm) x W 6.7 in (17 cm) x H 3.4 (8.6 cm)

**VOLUME: 56 OZ (1.65 L)**

KK. Pineapple Bowl

OTH-BULU-BOWL



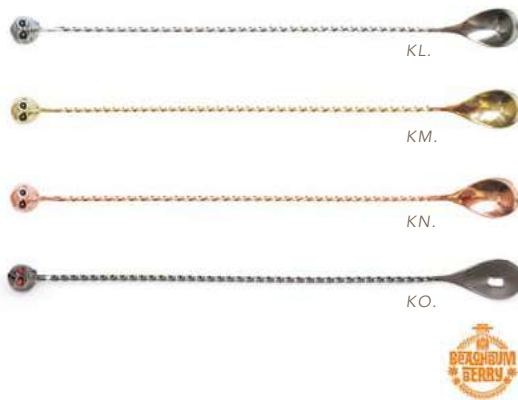


# COLLABORATIONS



# BEACHBUM BERRY BARWARE

Once described by the New York Times as “the Indiana Jones of Tiki,” Beachbum Berry is THE authority on the 20th-century tropical cocktail revolution in America. A seasoned lecturer and 7-time author on the subject, our collaboration with Beachbum brings a fresh island vibe and resurrects designs lost in time.



## BEACHBUM BERRY SKULL BAR SPOON

**MATERIAL** Stainless Steel  
**SIZE** H 13.2 / 15.7 in (33.5 / 40 cm) x W 1 in (2.5 cm)

LENGTH: 33.5 CM	
KL. Stainless Steel	BSP-SKL33ST
KM. Gold-Plated	BSP-SKL33G
KN. Copper-Plated	BSP-SKL33C
KO. Gunmetal Black	BSP-SKL33GB



## BEACHBUM BERRY GLASSWARE



**MATERIAL (PEARL DIVER, ZOMBIE)** Glass  
**MATERIAL (ACRYLIC PEARL DIVER)** Acrylic  
**SIZE** H 5.6 in (14.3 cm) x D 3.6 in (9.2 cm)  
**SIZE** H 6.9 in (17.5 cm) x 2.36 in (5.9 cm)

PEARL DIVER GLASS 12 OZ (360 ML)	
KP. 4 Pack	BBB-GLA-PRL12-4
Case of 24	BBB-GLA-PRL12-24
ACRYLIC PEARL DIVER GLASS 12 OZ (360 ML)	
KQ. 4 Pack	BBB-GLA-PRL12ACR-4
Case of 32	BBB-GLA-PRL12ACR-32
ZOMBIE GLASS 15 OZ (450 ML)	
KR. Set of 2	BBB-GLA-ZMB15-2
Case of 24	BBB-GLA-ZMB15-24





KS.

## BEACHBUM BERRY'S DEEP SIX COMMUNAL BOWL

**MATERIAL** Ceramic

**SIZE** L 9.8 in (25 cm) x W 4.9 in (12.5 cm) H 7.4 in (19 cm)

**VOLUME: 40 OZ (1.18 L)**

KS. Deep Six Communal Bowl **BBB-BWL-DP6**



KT.



## BEACHBUM BERRY'S NAVY GROG CONE KIT

**MATERIAL** Stainless Steel

**SIZE** H 5.6 in (14.3 cm) x D 3.6 in (9.2 cm)

KT. Metal Cone and Rod **BBB-NVYGR-ST**



KU.



## BEACHBUM BERRY'S SWIZZLE CUP

**MATERIAL** Stainless Steel

**SIZE** 3in (7.6 cm) x D 3in (7.6 cm)

**VOLUME: 14 OZ (414 ML)**

KU. Stainless Steel **BBB-GLA-SWZ14**



KV.

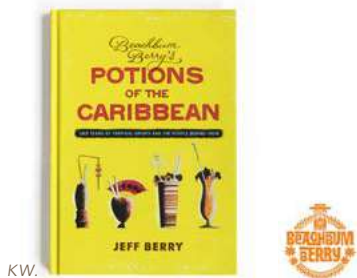


## BEACHBUM BERRY'S TIKI COCKTAIL PICKS

**MATERIAL** Plastic

**SIZE** H 5.6 in (14.3 cm) x D 3.6 in (9.2 cm)

KV. Plastic, Pack of 144 **BBB-PICK144**



KW.

## BEACHBUM BERRY'S POTIONS OF THE CARIBBEAN

- History with recipes, including 77 vintage Caribbean drink recipes, 16 of them never before published
- Lavishly illustrated with vintage graphics and rare historical photos
- Hardcover, 317 pages

**JEFF BERRY**

KW. Potions of the Caribbean **BOK-POTC-BBB**



KX.

## BEACHBUM BERRY'S SIPPIN' SAFARI 10<sup>TH</sup> ANNIVERSARY EXPANDED EDITION

- In-depth Tiki history with recipes, 14 of them never-before-published
- Completely redesigned featuring new graphics and photos unique to this edition
- Hardcover, 315 pages

**JEFF BERRY**

KX. Sippin' Safari **BOK-SIPP-BBB**

# BULU BARWARE

With equal parts rockabilly and rum enthusiast - Italian bartender Daniele Dalla Pola is a blinding barrage of passion and panache. Our collaborative line of Bulu™ barware is a celebration of the pineapple and everything it represents in hospitality.



DANIELE DALLA POLLA



**Bulu**  
BARWARE.



KY.



KZ.



LA.



LB.

## BULU™ BARWARE PINEAPPLE BAR SPOON

**MATERIAL** Stainless Steel

**SIZE** H 13.2 / 17 in (33.5 / 43.5 cm) x W 1 in (2.5 cm)

**LENGTH: 33.5 CM**

KY. Stainless Steel BSP-PNP33ST

KZ. Gold-Plated BSP-PNP33G

LA. Copper-Plated BSP-PNP33C

**LENGTH: 43.5 CM**

LB. Stainless Steel BSP-PNP43ST

## BULU™ PINEAPPLE BOWL

**MATERIAL** Ceramic

**SIZE** L 12.7 in (30.5 cm) x W 6.7 in (17 cm) x H 3.4 (8.6 cm)

**VOLUME: 56 OZ (1.65 L)**

LC. Pineapple Bowl OTH-BULU-BOWL



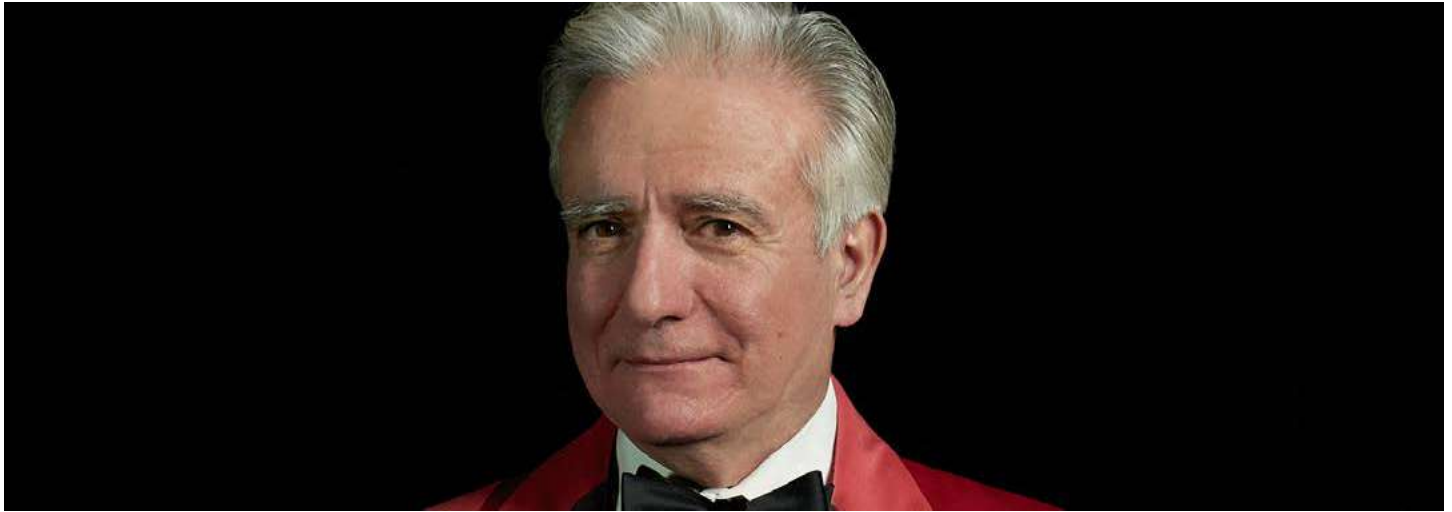
LC.



**Bulu**  
BARWARE.

# DALE DEGROFF COLLECTION

Often credited with reigniting the craft cocktail renaissance of the modern era, we are still riding the wave that 'King Cocktail' created during this time at NYC's famed Rainbow Room in the 1980s. With a nod to a time when showmanship was everything, our collaboration with Dale DeGroof shows off the theatrical side of bartending.



## DALE DEGROFF COLLECTION SCREENED LADLE

**MATERIAL** Silver-Plated Stainless Steel/EPNS  
**SIZE** L 12.5 in (31.75 cm) **CUP VOLUME** 2 oz (60 ml)

LD. Café Brûlot Ladle

DGF-LDL-BRU



## DALE DEGROFF COLLECTION CAFÉ BRÛLOT BOWL AND FORK SET

**INCLUDES** (1) Copper bowl, with Silver-Plated interior and Brass base plate  
(1) Silver-plated fork

**SIZE (BOWL)** H 8 in (20.3 cm) x D 10.7 in (27 cm)

**SIZE (FORK)** L 9.2 in (23.4 cm) x W 1.5 in (3.8 cm)

LE. Classic Edition

DGF-SET-BWL-FRK

LF. Special Edition with Dale

DGF-SET-BWL-FRK-SP

# GAZ REGAN

Known as much for his cheeky storytelling as he was a bar mentor, the legendary Gary "Gaz" Regan was always the first to make sure we are still having fun. In that respect, our collaboration continues in his work.



LG.

## GAZ REGAN NEGRONI FINGER STIRRER

**MATERIAL** Stainless Steel  
**SIZE** H 13.7 in (35 cm) x W 1 in (2.5 cm)

**LENGTH: 35 CM**

LG. Negroni Finger Stirrer

BSP-REG35ST



LH.

## THE GARY "GAZ" REGAN MUDDLER

**MATERIAL** Walnut with Brass  
**SIZE** H 9.4 in (23.8 cm) x D 1.8 in (4.5 cm)

**LENGTH: 23.8 CM**

LH. Gaz Regan Muddler

OTH-REG-MUD

# JIM MEEHAN

Known for his pioneering work as a bartender in NYC and as the author of the PDT Cocktail Book, Jim Meehan has been a guiding light for the industry for decades. A real stickler for precision, our collaboration trends toward the pursuit of excellence in all aspects of the bar.



## MEEHAN'S MIXOLOGY SPOONS

**MATERIAL** Stainless Steel  
**FEATURES** Six spoons per set / Attached to a ring for easy toggling / Comes in a reusable tin box.  
**SIZE** L 4.9 in (12.6 cm) x W 1 in (2.6 cm) x H 0.4 in (1 cm)

**SPOON VOLUME:** ¼ TSP, BAR SPOON, ¾ TSP, 1 TSP, ½ TBSP, 1 TBSP

LJ. Stainless Steel MHN-OTH-SPNS

# JEFFREY MORGENTHALER

With decades of full-time bartending experience, Jeffrey Morgenthaler literally wrote the book on bar technique. He has proven himself a role model for those looking for longevity in the hospitality industry, and our collaboration focuses on classy and utilitarian bar solutions.



## MORGENTHALER CHAMPAGNE SABER

**MATERIAL** Hardened Stainless Steel, Vacuum-Cast  
**SIZE** L 13.8 in (35 cm)

LJ. Stainless Steel MRG-OTH-SABR



## MORGENTHALER TRIOMPHE ATOMIZER

**MATERIAL** Plastic  
**SIZE** H 5.5in (14 cm) x D 1.45in (3.5cm)

LK. Chrome Color MRG-ATM-AL

# SHANNON MUSTIPHER

With an emphasis on color and design, our collaboration with cocktail and spirits educator Shannon Mustipher brings a modern lens to classic tropical cocktail motifs.



## SHANNON MUSTIPHER COCKTAIL STENCILS

**MATERIAL** Powder Coated Stainless Steel  
**SIZE** L 6 in (15.2 cm) x W 4 in (10 cm)

LL. Stencils, Pack of 3	SMU-OTH-STNC-3
-------------------------	----------------

SHANNON MUSTIPHER COLLECTION

## SHANNON MUSTIPHER ZOMBIE GLASSES



**MATERIAL** Glass  
**SIZE** H 6.9 in (17.5 cm) x 2.36 in (5.9 cm)

15 OZ (450 ML)	
LM. Glasses, Set of 2	SMU-GLA-ZMB15-2
Glasses, Case of 24	SMU-GLA-ZMB15-24



SHANNON MUSTIPHER COLLECTION

# NICO DE SOTO

Globetrotting French bartender Nico de Soto has served cocktails in more countries than most have visited. Our collaboration focuses on sleek, international designs and practicality for a bartender on the move.



LN.

LO.



## DE SOTO DOUBLE TEARDROP™ STIRRER

**MATERIAL** Stainless Steel

**SIZE** H 13.2 / 17 in (33.5 / 43.5 cm) x W 0.4 in (0.9 cm)

**LENGTH: 33.5 CM**

LN. Stainless Steel

**BSP-SOT33ST**

**LENGTH: 43.5 CM**

LO. Stainless Steel

**BSP-SOT43ST**



LP.

LQ.

LR.



## MIXTIN™ STIRRING TIN

**MATERIAL** 18/8 Stainless Steel with Brushed Finish

**FEATURES** Double-Walled and Vacuum Insulated

**SIZE** H 6 in (15.2 cm) x D 4 in (10.1 cm)

**VOLUME: 625 ML (21 OZ)**

LP. Banded, Stainless Steel

**MXG-MXTN625BND**

LQ. Banded, Gold Finish

**MXG-MXTN625BND-G**

LR. Banded, Gunmetal Finish

**MXG-MXTN625BND-GB**

LS. Pandan, Stainless Steel

**MXG-MXTN625PAN**

LT. Sakura, Stainless Steel

**MXG-MXTN625SAK**



LS.

LT.





## DE SOTO PETIT COCKTAIL SHAKER

**MATERIAL** Stainless Steel

**SIZE** H 6.1 in (15.6 cm) x D 3.1 in (8.1cm)

**VOLUME: 11.8 OZ (350 ML)**

LU. Petit Cocktail Shaker

SHA-SOT350ST

## ROBERT SIMONSON

Perhaps the most prolific beverage writer of the modern era - an award winning author, freelancer, and New York Times columnist — Robert Simonson has been educating the public about drinks for decades. Our collaboration celebrates the history of the old fashioned cocktail.



## ROBERT SIMONSON OLD-FASHIONED SET

- INCLUDES**
- (1) Bar spoon, 5 in
  - (1) Wood muddler, 5in
  - (2) Single old-fashioned glasses (6.5 oz) etched with "Old-Fashioned"



LV. Old-Fashioned Set, 4-Piece

KIT-SIM-OFASH

# AUDREY SAUNDERS COLLECTION

A mentor and role model to generations of New York City bartenders, Audrey Saunders has been pivotal in championing the classic cocktail renaissance of the modern era. Our collaboration with her brings a tight focus on the aesthetics of a proper cocktail serve.



## SAUNDERS COLLECTION GLASSWARE

**MATERIAL** Glass

**SIZE (TOT GLASS)** H 3.2 in (8.1 cm) x D 2.8 in (7.1 cm)

**SIZE (SOUR GLASS)** H 6 in (15.2 cm) x D 3.2 in (8.1 cm)



### TOT GLASS 4 OZ (118 ML)

LW. Schooner Edition, Set of 4	SAU-GLA-TOT-4-ENG
Schooner Edition, Set of 16	SAU-GLA-TOT-16-ENG

### SOUR GLASS 7 OZ (221 ML)

LX. 6 Pack	SAU-GLA-SG7-6
Case of 24	SAU-GLA-SG7-24



LW.



LX.



## SAUNDERS COLLECTION DIVIDEND CARAFE & BOWL SET

**MATERIAL** Hand-Blown Glass

**INCLUDES** (1) Dividend Service Bowl

(1) Dividend Service Carafe

**SIZE (CARAFE)** L 3.7 in (9.5 cm) x W 3.5 in (9 cm) x H 3.5 in (9 cm)

**SIZE (BOWL)** H 2.3 in (5.8 cm) x D 3.5 in (8.9 cm)

### VOLUME: 4 OZ (118 ML)

LX. Dividend Set	SAU-SET-SIDE
------------------	--------------



LY.



# DAVID WONDRICH CLASSIC COLLECTION

Widely hailed as the world's foremost cocktail historian, author David Wondrich has spent decades studying the hazy history of alcoholic beverages. Our Classic Collection represents his collaboration with Cocktail Kingdom's own Greg Boehm - curator of the largest known antique cocktail book and bar tool collections in the world. The products below pull inspiration from the beauty of an antique tool, while tweaking ergonomics for the modern bartender.



LZ.



## DAVID WONDRICH JIM GRAY™ BARSPOON

**MATERIAL** Stainless Steel with Silver-Plated EPNS finish  
**SIZE** H 13 in (33 cm) x W 1.2 in (3 cm)

**LENGTH: 33 CM**

LZ. Silver-Plated EPNS

WON-BSP-JG33SV



MA.



2-PIECE SET

## DAVID WONDRICH SHAKERS

**MATERIAL** Silver-Plated EPNS  
**SIZE (COLEY™)** H 10.2 in (26 cm) x D 3.4 in (.6 cm)  
**SIZE (VOLNEY™)** H 9.4 in (24 cm) x D 3.7 in (9.5 cm)

**VOLUME: 18 OZ (532 ML)**

MA. Coley™ Shaker

WON-SHA-COL520



MB.



2-PIECE SET

**VOLUME: 24 OZ (709 ML)**

MB. Volney™ Shaker

WON-SHA-VOL715



## DAVID WONDRICH LINDLEY-PICK HAWTHORNE STRAINER

**MATERIAL** Stainless Steel with Silver-Plated EPNS finish  
**SIZE** H 6 in (15.2 cm) x W 3.25 in (8.2 cm)

**LENGTH: 33.5 CM**

MC. Silver-Plated EPNS

WON-STR-LP



## DAVID WONDRICH BERRY WALL™ FOOTED MIXING GLASS

**MATERIAL** Crystal, Lead-Free  
**SIZE** H 7.8 in (19.7 cm) x D 3.7 in (9.3 cm)

**VOLUME: 500 ML (17 OZ)**

MD. Berry Wall™ Footed Mixing Glass, Clear

WON-MXG-500BW-CLR



## DAVID WONDRICH CATO™ MUDDLER

**MATERIAL** Natural Hardwood (Non-Treated, Non-Varnished)  
**SIZE** L 7.5 in (19 cm) x D 1.1 in (2.8 cm)

ME. Muddler

WON-MUD-CATO



## DAVID WONDRICH ASHLEY NUTMEG GRATER

**MATERIAL** Silver-Plated EPNS  
**SIZE** H 2.7 in (7 cm) x D 1.8 in (4.8 cm)

MF. Silver-Plated EPNS

WON-OTH-NTMG



## DAVID WONDRICH BLUE BLAZER MUGS

**MATERIAL** Silver-Plated Brass  
**SIZE** H 5.1 in (13 cm) x D 3.3 in (8.3 cm) (without handle)

**VOLUME: 19 OZ (575 ML)**

MG. Set of 2

WON-GLA-BLZR-2



## DAVID WONDRICH CORDIAL GLASSES

**MATERIAL** Glass

**SIZE** H 5.25 in (13.3 cm) x D 2.5 in (6.3 cm)

**VOLUME: 3 OZ (90 ML)**

MH. 4 Pack

WON-GLA-GRG03-4

Case of 24

WON-GLA-GRG03-24



## DAVID WONDRICH O'DOHERTY TODDY LIFTER

**MATERIAL** Glass

**SIZE** H 6 in (15.2 cm) x D 2 in (5 cm)

**VOLUME: 2 OZ (59 ML)**

MI. Toddy Lifter

WON-OTH-TOD



## DAVID WONDRICH PUNCH BOWL

**MATERIAL** White Stoneware

**SIZE** H 4.5 in (11.4 cm) x D 11 in (28 cm)

**VOLUME: 1 GALLON (3.79 L)**

MJ. Punch Bowl

WON-PUNC01



## DAVID WONDRICH STIRRED SELECTION

**INCLUDES** (1) Clear Berry Wall™ Footed Mixing Glass

(1) Jim Gray™ Barspoon

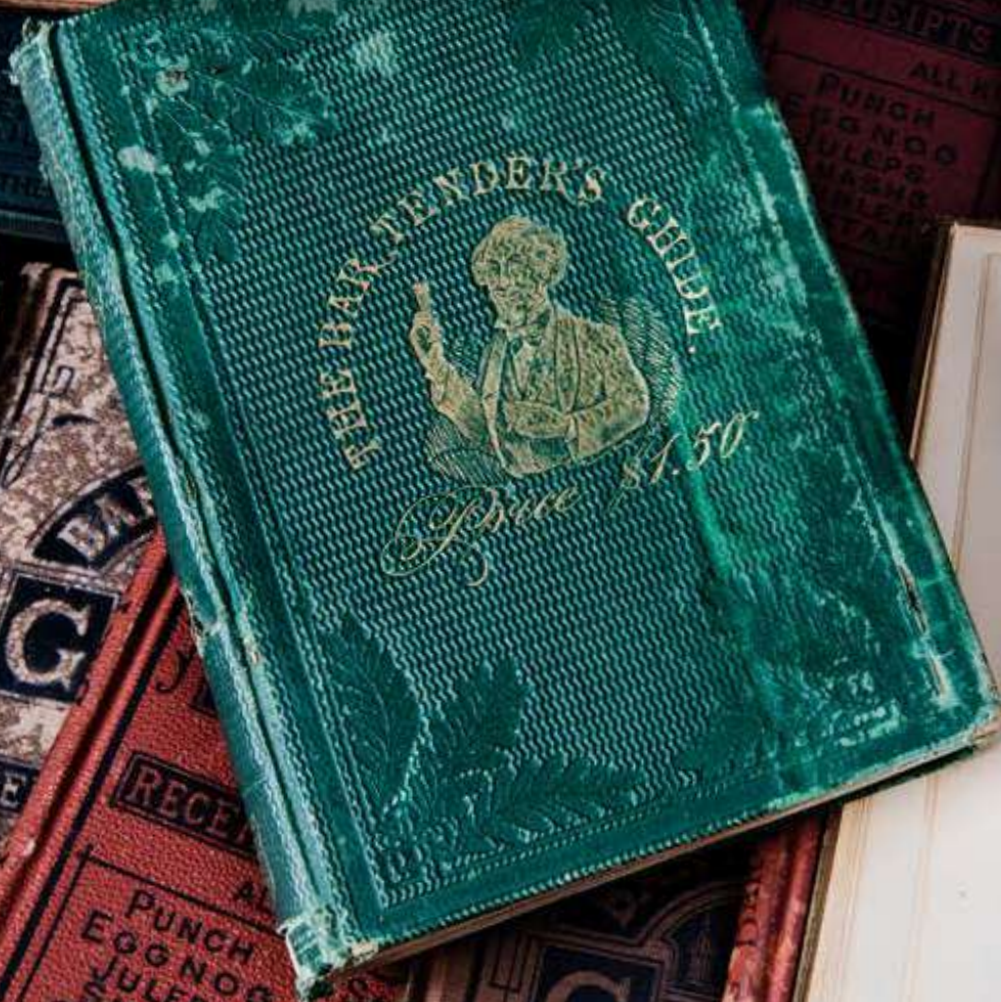
(1) Hauck™ Julep Strainer

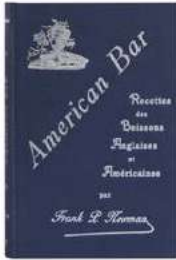
MK. Stirred Selection, 3 Piece Set

KIT-WON-STIR

# LIBRARY

The Cocktail Kingdom Research Library houses the largest known collection of antique beverage books and tools in the world—stacks of artifacts dating back to the 1600s. From this collection is where we draw inspiration for the barware that has helped define the modern era of cocktails. Occasionally, we create facsimiles of standout titles from this collection.





ML.

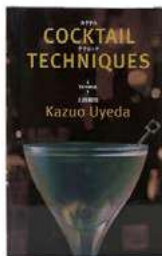
## AMERICAN BAR

**FRANK P. NEWMAN**

ML. American Bar

BOK-VIN-NEW-AM

- Originally published in 1904
- Entirety of book is in French, with the introduction written in English and French
- Introduction by Fernando Castellon
- Hardcover, 111 pages



MM.

## COCKTAIL TECHNIQUES

**KAZUO UYEDA**

MM. Cocktail Techniques

BOK-TECH-UYE

- Gives a great glimpse into classic Japanese bartending
- First English edition
- Seminal work by internationally renowned Kazuo Uyeda



MN.

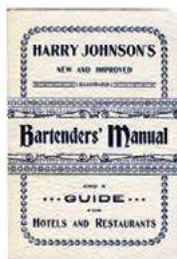
## THE FINE ART OF MIXING DRINKS

**DAVID A. EMBURY**

MN. The Fine Art of Mixing Drinks

BOK-VIN-FIN-EMB

- First cocktail book ever published
- Reproduction of 1862 edition, with new introduction and appendix by David Wondrich
- Hardcover, 272 pages



MO.

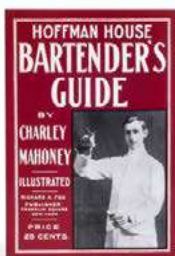
## HARRY JOHNSON'S BARTENDERS' MANUAL

**HARRY JOHNSON**

MO. Bartenders' Manual

BOK-VIN-JOH-HAR

- Mindset of late 1800s bartenders with a great collection of recipes and tips on techniques
- Reproduction of 1900 edition with new introduction by Robert Hess
- Paperback, 288 pages



MP.

## HOFFMAN HOUSE BARTENDER'S GUIDE

**CHARLEY MAHONEY**

MP. Hoffman House Bartender's Guide

BOK-VIN-MAH-HOF

- The bartender's guide from the famous Hoffman House hotel in New York City
- Reproduction of 1912 edition with new introduction by noted bartender Jim Meehan
- Paperback, 264 pages



MQ.

## HOW TO MIX DRINKS: A BON VIVANT'S COMPANION

**JERRY THOMAS**

MQ. How to Mix Drinks

BOK-VIN-BON-JT

- First cocktail book ever published
- Reproduction of 1862 edition, with new introduction and appendix by David Wondrich
- Hardcover, 272 pages



MR.

## THE IDEAL BARTENDER

**TOM BULLOCK**

MR. The Ideal Bartender

BOK-VIN-IDE-BUL

- First cocktail book published by an African-American author
- Introduction by noted rum authority Ian Burrell
- Originally published in 1917
- Hardcover, 53 pages



MS.

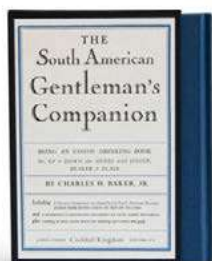
## LOUIS' MIXED DRINKS

**LOUIS MUCKENSTRUM**

MS. Louis' Mixed Drinks

BOK-VIN-LOU-MUC

- Originally published in 1906
- New introduction by Phil Duff
- Hardcover, 113 pages



MT.

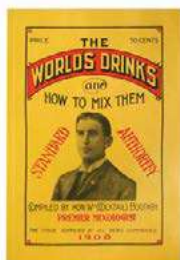
## THE SOUTH AMERICAN GENTLEMAN'S COMPANION

**CHARLES H. BAKER, JR.**

MT. The South American Gentleman's Companion

BOK-VIN-SOU-BAK

- An adventurous guide to cocktails and a great read; the famous exotic drinking book
- Originally published in 1951, with introduction by St. John Frizell
- Hardcover with slip case, 224 pages



MU.

## THE WORLD'S DRINKS AND HOW TO MIX THEM

**WILLIAM BOOTHBY**

MU. The World's Drinks and How to Mix Them

BOK-VIN-WOR-BOO

- Reproduction of the 1884 edition
- New introduction by Brian Rea
- Hardcover, 128 pages



# STAINLESS STEEL COLLECTION

\*ITEMS SHOWN ARE NOT TO SCALE\*

## STAINLESS STEEL COLLECTION

- MV. SET OF LEOPOLD® WEIGHTED SHAKING TINS**  
KIT-SHA-LEO-ST
- MW. JAPANESE STYLE JIGGER, 20/40 ML**  
JIG-JAP2040ST
- MX. KORIKO® HAWTHORNE STRAINER**  
STR-KOR-STL
- MY. CHURCH KEY**  
OTH-CHKY-ST
- MZ. SKULL BAR Spoon**  
BSP-SKL33ST
- NA. LEOPOLD® BAR Spoon, 36 CM**  
BSP-LEO36ST
- NB. DE SOTO DOUBLE TEARDROP™ STIRRER, 43 CM**  
BSP-SOT43ST
- NC. DE SOTO DOUBLE TEARDROP™ STIRRER, 33 CM**  
BSP-SOT33ST
- ND. JAPANESE STYLE JIGGER, 1 OZ / 2 OZ**  
JIG-JAP0102ST
- NE. DE SOTO PETIT COCKTAIL SHAKER**  
SHA-SOT350ST
- NF. HEAVYWEIGHT KORIKO® JIGGER, 1 OZ / 2 OZ**  
JIG-HKOR-0102ST
- NG. JAPANESE STYLE JIGGER, 25ML / 50 ML**  
JIG-JAP2550ST
- NH. BULU™ PINEAPPLE BAR Spoon, 33 CM**  
BSP-PNP33ST
- NI. BULU™ PINEAPPLE BAR Spoon, 43 CM**  
BSP-PNP43ST
- NJ. GAZ REGAN NEGRONI FINGER STIRRER, 35 CM**  
BSP-REG35ST
- NK. KORIKO® 2-PRONG HAWTHORNE STRAINER**  
STR-KOR2PR-STL
- NL. GARNISH TONGS**  
OTH-GRTNG-ST
- NM. MEEHAN'S MIXOLOGY SPOONS**  
MHN-OTH-SPNS
- NN. BROMLEY™ BAR Spoon, 36 CM**  
BSP-BROM36-ST
- NO. STEPPED JIGGER**  
RES-JIG01ST
- NP. BROMLEY™ COCKTAIL PICK**  
OTH-PICK-BROM12ST
- NQ. STEPPED JIGGER (NO HANDLE)**  
RES-JIG02ST
- NR. SWIZZLE CUP**  
BBB-GLA-SWZ14
- NS. ANTIQUE-STYLE HAWTHORNE STRAINER**  
STR-ANTQ-ST
- NT. LEOPOLD® JIGGER, 1 OZ / 2 OZ**  
JIG-LEO-0102ST
- NU. LEOPOLD® JIGGER BANDED, 1 OZ / 2 OZ**  
JIG-LEOB-0102ST
- NV. LARGE ANTIQUE-STYLE HAWTHORNE STRAINER**  
STR-LANTQ-ST
- NW. BEACHBUM BERRY'S NAVY GROG CONE KIT**  
BBB-NVYGR-ST
- NX. MUDDLER BAR Spoon, 30 CM**  
BSP-MUD30ST
- NY. MUDDLER BAR Spoon, 40 CM**  
BSP-MUD40ST
- NZ. BUSWELL CAST METAL PEELER**  
OTH-BUSPLR-ST
- OA. THREADED BITTERS BOTTLE**  
BTB-RDD100SV
- OB. LEOPOLD® JIGGER, 25/50 ML**  
JIG-LEO-2550ST
- OC. COCKTAIL PICKS**  
OTH-PICK12ST
- OD. LEOPOLD® JIGGER BANDED, 25/50 ML**  
JIG-LEOB-2550ST
- OE. BITTERS BOTTLE**  
BTB-RCD100ST
- OF. COCO™ STRAINER PREMIUM MESH CONE**  
STR-COCO-ST
- OG. HOFFMAN® BAR Spoon, 33 CM**  
BSP-HOF33ST
- OH. HOFFMAN® BAR Spoon, 43 CM**  
BSP-HOF43ST
- OI. DASHDART®**  
BTB-DD2PK-SV
- OJ. STEEL STRAW**  
STRW-05ST24
- OK. PREMIUM JULEP STRAINER, MIRROR FINISH**  
STR-JUL-MIR
- OL. SET OF KORIKO® WEIGHTED SHAKING TINS**  
KIT-SHA-KOR-ST
- OM. PREMIUM JULEP STRAINER, MATTE FINISH**  
STR-JUL-MAT
- ON. DASHDART®**  
BTB-DD2PK-SV
- OO. WIDE-MOUTH SPEED POURER**  
OTH-SPDPR4ST
- OP. MIXTIN™ STIRRING TIN, BANDED**  
MXG-MXTN625BND
- OQ. USAGI™ HEAVYWEIGHT COBBLER SHAKER**  
SHA-USG500ST-MIR
- OR. BUSWELL® 4-PRONG HAWTHORNE STRAINER**  
STR-BUS4PR-ST
- OS. JULEP CUP**  
GLA-JUL12ST-MIR
- OT. MIXTIN™ STIRRING TIN, SAKURA**  
MXG-MXTN625SAK
- OU. SPEED POURER**  
OTH-SPDPR6ST

PLEASE NOTE: ITEMS SHOWN ARE NOT TO SCALE



# GOLD COLLECTION

\*ITEMS SHOWN ARE NOT TO SCALE\*

## GOLD COLLECTION

- OV. GARNISH TONGS**  
OTH-GRTNG-G
- OW. KORIKO® SMALL WEIGHTED SHAKING TIN**  
SHA-KOR18G
- OX. DASHDART®**  
BTB-DD2PK-G
- OY. THREADED BITTERS BOTTLE**  
BTB-RDD100G
- OZ. DASHER TOP**  
BTB-CD3PK-G
- PA. 70MM ICE BALL MAKER**  
ICE-70IBM-G
- PB. BEVELED BITTERS BOTTLE**  
BTB-BCD100G
- PC. TEARDROP™ BAR Spoon, 30 CM**  
BSP-TD30G
- PD. DANUTA™ DOUBLE ROCKS GLASS**  
GLA-DANRCK15G-4
- PE. LEOPOLD™ SMALL WEIGHTED SHAKING TIN**  
SHA-LEO18G
- PF. SET OF LEOPOLD® WEIGHTED SHAKING TINS**  
KIT-SHA-LEO-G
- PG. JAPANESE STYLE JIGGER, ½ / ¾ OZ**  
JIG-JAP1234G
- PH. LARGE ANTIQUE-STYLE HAWTHORNE STRAINER**  
STR-LANTQ-G
- PI. BROMLEY™ COCKTAIL PICK**  
OTH-PICK-BROM12G
- PJ. ANTIQUE-STYLE HAWTHORNE STRAINER**  
STR-ANTQ-G
- PK. JAPANESE STYLE JIGGER, 1 OZ / 2 OZ**  
JIG-JAP0102G
- PL. SET OF KORIKO® WEIGHTED SHAKING TINS**  
KIT-SHA-KOR-G
- PM. KORIKO® HAWTHORNE STRAINER**  
STR-KOR-G
- PN. COCO™ STRAINER PREMIUM MESH CONE**  
STR-COCO-G
- PO. LEOPOLD® JIGGER, 1 OZ / 2 OZ**  
JIG-LEO-0102G
- PP. LEOPOLD® JIGGER, BANDED, 1 OZ / 2 OZ**  
JIG-LEOB-0102G
- PQ. NICK AND NORA GLASS**  
GLA-NCK5G-6
- PR. PREMIUM JULEP STRAINER**  
STR-JUL-G
- PS. TEARDROP™ BAR Spoon, 40 CM**  
BSP-TD40G
- PT. CHURCH KEY**  
OTH-CHKY-G
- PU. SKULL BAR Spoon, 33 CM**  
BSP-SKL33G
- PV. HOFFMAN® BAR Spoon, 33 CM**  
BSP-HOF33G
- PW. COCKTAIL PICKS**  
OTH-PICK12G
- PX. MIXTIN™ STIRRING TIN, BANDED**  
MXG-MXTN625BND-G
- PY. BROMLEY™ BAR Spoon, 36 CM**  
BSP-BROM36-G
- PZ. BULU™ PINEAPPLE BAR Spoon**  
BSP-PNP33G
- QA. BUSWELL CAST METAL PEELER**  
OTH-BUSPLR-G
- QB. LEOPOLD® BAR Spoon, 36 CM**  
BSP-LEO36G
- QC. JULEP CUP**  
GLA-JUL12ST-G
- QD. KORIKO® LARGE WEIGHTED SHAKING TIN**  
SHA-KOR28G
- QE. BUSWELL® 4-PRONG HAWTHORNE STRAINER**  
STR-BUS4PR-G
- QF. USAGI™ HEAVYWEIGHT COBBLER SHAKER**  
SHA-USG500G
- QG. TALON TONGS**  
OTH-TLNTNG-G
- QH. KORIKO® 2-PRONG HAWTHORNE STRAINER**  
STR-KOR2PR-G
- QI. 55MM ICE BALL MAKER**  
ICE-55IBM-G
- QJ. LEOPOLD™ LARGE WEIGHTED SHAKING TIN**  
SHA-LEO28G

PLEASE NOTE: ITEMS SHOWN ARE NOT TO SCALE



# COPPER COLLECTION

\*ITEMS SHOWN ARE NOT TO SCALE\*

## COPPER COLLECTION

- QK. DASHER TOP**  
BTB-CD3PK-C
- QL. BITTERS BOTTLE, 50 ML**  
BTB-RCD50C
- QM. GARNISH TONGS**  
OTH-GRTNG-C
- QN. TEARDROP™ BARSPOON, 30 CM**  
BSP-TD30C
- QO. TEARDROP™ BARSPOON, 40 CM**  
BSP-TD40C
- QP. BULU™ PINEAPPLE BARSPOON, 33 CM**  
BSP-PNP33C
- QQ. TALON TONGS**  
OTH-TLNTNG-C
- QR. DASHER TOP**  
BTB-CD3PK-C
- QS. BEVELED BITTERS BOTTLE, 50 ML**  
BTB-BCD50C
- QT. USAGI™ HEAVYWEIGHT COBBLER SHAKER**  
SHA-USG500C
- QU. MINI MULE SHOTS**  
GLA-MUL05C-16
- QV. JULEP CUP**  
GLA-JUL12ST-C
- QW. LEOPOLD™ SMALL WEIGHTED SHAKING TIN**  
SHA-LEO18C
- QX. PREMIUM JULEP STRAINER**  
STR-JUL-C
- QY. MOSCOW MULE MUG**  
GLA-MUL12C
- QZ. SKULL BARSPOON, 33 CM**  
BSP-SKL33C
- RA. BROMLEY™ BARSPOON, 36 CM**  
BSP-BROM36-C
- RB. JAPANESE STYLE JIGGER, 1 OZ / 2 OZ**  
JIG-JAP0102C
- RC. BROMLEY™ COCKTAIL PICK**  
OTH-PICK-BROM12C
- RD. JAPANESE STYLE JIGGER, ½ / ¾ OZ**  
JIG-JAP1234C
- RE. HOFFMAN® BARSPOON, 33 CM**  
BSP-HOF33C
- RF. LEOPOLD® BARSPOON, 36 CM**  
BSP-LEO36C
- RG. KORIKO® HAWTHORNE STRAINER**  
STR-KOR-C
- RH. KORIKO® SMALL WEIGHTED SHAKING TIN**  
SHA-KOR18C
- RI. STEPPED JIGGER**  
RES-JIG01C
- RJ. BEVELED BITTERS BOTTLE**  
BTB-BCD100C
- RK. SET OF LEOPOLD® WEIGHTED SHAKING TINS**  
KIT-SHA-LEO-C
- RL. CHURCH KEY**  
OTH-CHKY-C
- RM. LEOPOLD® JIGGER**  
JIG-LEO-0102C
- RN. COCKTAIL PICKS**  
OTH-PICK12C
- RO. LEOPOLD® JIGGER, BANDED, 1 OZ / 2 OZ**  
JIG-LEOB-0102C
- RP. COCO™ STRAINER PREMIUM MESH CONE**  
STR-COCO-C
- RQ. SET OF KORIKO® WEIGHTED SHAKING TINS**  
KIT-SHA-KOR-C
- RR. THREADED BITTERS BOTTLE**  
BTB-RDD100C
- RS. BUSWELL® 4-PRONG HAWTHORNE STRAINER**  
STR-BUS4PR-C
- RT. WIDE-MOUTH SPEED POURER**  
OTH-SPDPR3C
- RU. ANTIQUE-STYLE HAWTHORNE STRAINER**  
STR-ANTQ-C
- RV. BUSWELL CAST METAL PEELER**  
OTH-BUSPLR-C
- RW. LARGE ANTIQUE-STYLE HAWTHORNE STRAINER**  
STR-LANTQ-C
- RX. SPEED POURER**  
OTH-SPDPR4C
- RY. KORIKO® 2-PRONG HAWTHORNE STRAINER**  
STR-KOR2PR-C
- RZ. CAFÉ BRÛLOT BOWL AND FORK SET**  
DGF-SET-BWL-FRK
- SA. BUSWELL CAST METAL PEELER**  
OTH-BUSPLR-C
- SB. DASHDART®**  
BTB-DD2PK-C
- SC. 55MM ICE BALL MAKER**  
ICE-55IBM-C
- SD. DASHDART®**  
BTB-DD2PK-C
- SE. CAFÉ BRÛLOT BOWL AND FORK SET  
SPECIAL EDITION WITH DALE STATUETTES**  
DGF-SET-BWL-FRK-SP
- SF. KORIKO® LARGE WEIGHTED SHAKING TIN**  
SHA-KOR28C

PLEASE NOTE: ITEMS SHOWN ARE NOT TO SCALE



\*ITEMS SHOWN ARE NOT TO SCALE\*

## GUNMETAL BLACK COLLECTION

- SG. TEARDROP™ BAR spoon, 40 CM**  
BSP-TD40GB
- SH. JAPANESE STYLE JIGGERS, ½ / ¾ OZ**  
JIG-JAP1234GB
- SI. SET OF LEOPOLD® WEIGHTED SHAKING TINS**  
KIT-SHA-LEO-GB
- SJ. KORIKO® HAWTHORNE STRAINER**  
STR-KOR-GB
- SK. TRIDENT BAR spoon, 40 CM**  
BSP-TRI40GB
- SL. MIXTIN™ STIRRING TIN, BANDED**  
MXG-MXTN625BND-GB
- SM. JULEP CUP**  
GLA-JUL12ST-GB
- SN. HOFFMAN® BAR spoon, 43.5 CM**  
BSP-HOF43GB
- SO. JAPANESE STYLE JIGGERS, 1 OZ / 2 OZ**  
JIG-JAP0102GB
- SP. SET OF KORIKO® WEIGHTED SHAKING TINS**  
KIT-SHA-KOR-GB
- SQ. KORIKO® 2-PRONG HAWTHORNE STRAINER**  
STR-KOR2PR-GB
- SR. LEOPOLD® JIGGER, BANDED, 1 OZ / 2 OZ**  
JIG-LEOB-0102GB
- SS. BUSWELL® 4-PRONG HAWTHORNE STRAINER**  
STR-BUS4PR-GB
- ST. LEOPOLD® JIGGER, 1 OZ / 2 OZ**  
JIG-LEO-0102GB
- SU. TEARDROP™ BAR spoon, 30 CM**  
BSP-TD30GB
- SV. COCO™ STRAINER PREMIUM MESH CONE**  
STR-COCO-GB
- SW. GARNISH TONGS**  
OTH-GRTNG-GB
- SX. DASHDART®**  
BTB-DD2PK-B
- SY. SKULL BAR spoon, 33 CM**  
BSP-SKL33GB
- SZ. PREMIUM JULEP STRAINER**  
STR-JUL-GB
- TA. BROMLEY™ BAR spoon, 36 CM**  
BSP-BROM36-GB

## GET IN TOUCH



### SHOWROOM

31 West 8th Street, Second Floor  
New York, New York 10011

**HOURS:** Monday - Friday 10:30am - 5:00pm (EST)

### CONTACT US

31 West 8th Street, Second Floor  
New York, New York 10011

<b>GENERAL INQUIRIES</b>	+1 (212) 647-9166(EST) <a href="mailto:info@cocktailkingdom.com">info@cocktailkingdom.com</a>
<b>PRESS INQUIRIES</b>	<a href="mailto:press@cocktailkingdom.com">press@cocktailkingdom.com</a>
<b>SALES INQUIRIES</b>	<a href="mailto:sales@cocktailkingdom.com">sales@cocktailkingdom.com</a>

### FOLLOW US

 [@cocktailkingdom](https://www.instagram.com/cocktailkingdom)

 [@cocktailkingdom](https://www.youtube.com/cocktailkingdom)

### LIBRARY

**GENERAL INQUIRIES** [library@cocktailkingdom.com](mailto:library@cocktailkingdom.com)  
[VIRTUAL LIBRARY](#)

**CHEERS!**